

## YOUR REAL WORLD EDUCATION STARTS AT CARE

ENGINEERING ADMISSIONS OPEN  
CALL TO JOIN : 91769 45000 / 25000

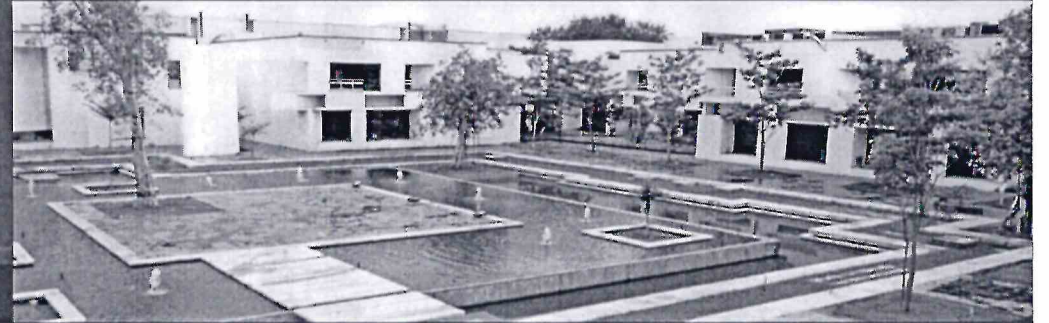
Counseling code : 3841

### Under graduate courses

- CIVIL
- MECH
- CSE
- ECE
- MSE ( Materials Science Engg )

### Post graduate courses

- MBA
- ME Construction Engineering and Management
- ME Engineering Design
- ME Mobile and Pervasive Computing



### Campus facilities

- Highly qualified and trained faculty
- Fully equipped laboratories
- Full time Internet facilities
- Furnished common rooms
- Fine hostel and transportation facility
- Emphasis on sports and other extracurricular activities
- Counseling and proper mentoring for students
- Effective placement cell and industrial tie-ups
- No donation
- Lateral Entry Seats Available
- Scholarship for students with a cutoff of above 170



**YOUR REAL WORLD EDUCATION STARTS AT CARE**

**3841**  
**COUNSELLING CODE**



**ENGINEERING ADMISSIONS OPEN  
CALL TO JOIN  
91769 45000 / 28000**

**Professional Development**

- \* Auto CAD, CNC and Solid works
- \* Staad Pro and MS Project
- \* Robotics, Mat lab and VHDL
- \* JAVA, .Net, Cloud Computing and Oracle

**Holistic Education**

- \* Eco CARE
- \* Literary Club
- \* Photography Club
- \* Cultural Club
- \* Music Club

*S. Dhanya*  
**PRINCIPAL**  
**CARE COLLEGE OF ENGINEERING**  
No. 27, Thayanur, Trichy-620 009.

**Under Graduate Courses**

**CIVIL MECH CSE ECE MSE**

**Post Graduate Courses**

**MBA  
ME Construction Engg and Management  
ME Engineering Design  
ME Mobile and Pervasive Computing**



**Students are  
placed with  
CTC of 4.5 Lakhs**

- \* No donation
- \* Lateral Entry Seats Available
- \* Scholarship for students  
with a cutoff above 170

**CARE Group of Institutions**

**G.Narayanan Educational Trust**

**Approved by**

**AICTE New Delhi**

**Affiliated to Anna University**



## CAMPUS FACILITIES

- Quality Education
- World class Infrastructure
- Foster Creative Training
- Encouragement for innovation
- Creating the best Ambience for education & Research
- Multi disciplinary Education
- Massive Indoor stadium
- Industry – Institute Interaction
- Effective Placement cell & Industrial Tie – up
- Project centre where students can apply concepts learned and work on real components
- Fine Hostel & Transport Facility

# 3841

COUNSELLING CODE

[www.care.ac.in](http://www.care.ac.in)

**CARE**   
Center for Applied Research & Education  
**GROUP OF INSTITUTIONS**

## CARE Merit Scholarship

+2 Cut Off Marks Tuition Fee Waiver

190 Above – 100% Free

180 to 189 – 75% Free

170 to 179 – 50% Free



**CALL TO JOIN | 91769 45000 / 28000**

பசுமையான சூழலில் அதிநவீன செயல்முறைக் கூடங்களும் ஆயிரக்கணக்கான புத்தகங்களுடன் கூடிய நூலகமுடைய எங்கள் கல்லூரியில் மிகவும் திறமை வாய்ந்த ஆசிரியர்களால் பொறியியல் படிப்பு கற்பிக்கப்படுகிறது . உங்கள் வெற்றிகரமான வாழ்க்கைக்கான முதல்படி எங்களிடமிருந்து ஆரம்பிக்கட்டும்

**27, Dindigul NH Road, Trichy - 620 009**





Center for Applied Research & Education

GROUP OF INSTITUTIONS

27, Thayanur, Dindigul NH Road, Trichy - 620 009

- ARCHITECTURE
- MANAGEMENT
- ENGINEERING

TRANSFORMING LIVES THROUGH EDUCATION & RESEARCH

COUNSELLING CODE

3841

ADMISSIONS OPEN  
CALL TO JOIN

91769 45000 | 91769 28000

Students are placed with

CTC 5.5LPA in Top MNC's HP,HCL,CTS, Infoview,Wipro,Amazon,Mahindra, Tech Mahindra, Flextronics etc

*S. Dhanya*

PRINCIPAL  
CARE COLLEGE OF ENGINEERING  
No. 27, Thayanur, Trichy 620 009

Highest Placement Record in Top 5 Engineering Colleges in Trichy

Some of Our Recruiters are:



www.care.ac.in



fb/careschoolofengineering



## Career and Professional Development Courses and Workshops

Auto CAD | 3 D Printing | CNC | Solid Works | Staad Pro | Robotics | IoT  
Arduino | LoRa | VHDL | Cadence | Android | Python | SQL  
Cloud Computing | Big Data Analytics

- World Class Infrastructure
- Offering Quality Education
- Creative Thinking
- Encouraging Innovation
- Providing Multi-Disciplinary Education
- Excellent Hostel & Transport

### CARE Merit Scholarship

+2 Cut Off Marks - Tuition Fee Waiver

190 Above - 100% Free

180 to 189 - 75% Free

170 to 179 - 50% Free

### Under Graduate Courses

B.E : CIVIL CSE ECE MECH

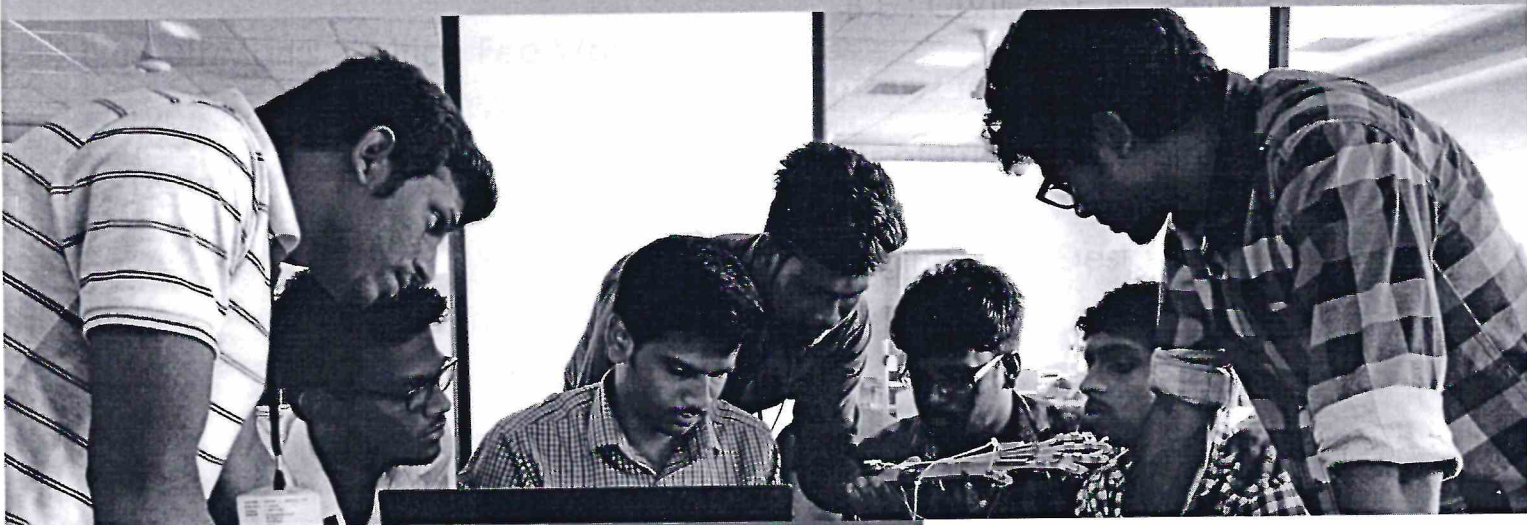
### Post Graduate Courses

Master of Business Administration  
M.E Construction Engg and Management  
M.E Engineering Design

### CARE Clubs

*S. Dhanya*  
**PRINCIPAL**  
**CARE COLLEGE OF ENGINEERING**  
No. 27, Thayanur, Trichy-620 009.

Science | Eco CARE | Literary | Photography | Cultural | Music | NSS



**COUNSELLING CODE**  
**3841**

[www.care.ac.in](http://www.care.ac.in)  
[fb/careschoolofengineering](https://fb/careschoolofengineering)

ADMISSIONS OPEN /  
LATERAL ENTRY SEATS AVAILABLE  
**CALL TO JOIN**

CARE Group of Institutions  
91769 45000 | 91769 28000



### CARE Infrastructure

World Class Infrastructure  
Centralized Air-conditioned Library  
WiFi Enabled Campus  
Massive Indoor Auditorium  
Fine Hostels & Bus facilities

### Learning Edge

Hands-on experience through summer and Winter Workshops  
Value Added Programmes based on Industry Requirements  
Industrial ready Certificate Programs  
Guest Lectures from Industry Leaders  
Real time Project for Students

### Placements

100% Placement for 2019 - 2020  
34 Companies visited  
10 Lakhs Highest CTC offered  
25 Companies visited with CTC more than 2 Lakhs per Annum  
65% placement in Core companies



## Build Your Career @ CARE

91769 45000, 91769 28000, 89396 19000  
27, Thayanur, Dindigul Road, Trichy - 9  
[www.care.ac.in](http://www.care.ac.in)

**Admissions  
Open**



ENGINEERING  
BUSINESS SCHOOL  
ARTS & SCIENCE

*S. Dhany*  
**PRINCIPAL  
CARE COLLEGE OF ENGINEERING  
No. 27, Thayanur, Trichy-620 009.**

## CARE College of Engineering

(Approved by AICTE, New Delhi &  
Affiliated to Anna University, Chennai)

### Under Graduate Courses

B.E : CIVIL / CSE / ECE / MECH

B.Tech: Artificial Intelligence & Data Science

### Post Graduate Courses

M.E: Construction Engg& Management

M.E: Engineering Design

M.E: Computer Science and Machine Learning

### CARE Merit Scholarship

+2 Cut off marks Tuition Fee waiver

190 & above – 100%

180 to 189 – 75%

170 to 179 – 50%

**COUNSELLING CODE: 3841**

**Highest Placement Record  
among Top 5 Colleges in Trichy**

## CARE Business School

(Approved by AICTE, New Delhi &  
Affiliated to Anna University, Chennai)

Two Years full time MBA

HR | Operations | Finance | Marketing

## CARE College of Arts & Science

(Affiliated to Bharathidasan University, Trichy)

### Courses

B.Com

B.Com (CA)

BBA

B.Sc Visual Communication

B.Sc Interior Design



*S. Shanth*

**PRINCIPAL  
CARE COLLEGE OF ENGINEERING  
No. 27, Thayanur, Trichy-620 009.**



- ARCHITECTURE
- MANAGEMENT
- ENGINEERING

**TRANSFORMING LIVES THROUGH  
 EDUCATION & RESEARCH**

**COUNSELLING CODE**

**3841**

**ADMISSIONS OPEN  
 CALL TO JOIN**

**91769 28000 | 91769 45000**

**Students are  
 placed with**

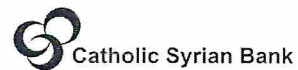
CTC 10 LPA in Top MNC's Byju's, HP, HCL  
 CTS, Infoview, Wipro, Amazon, Mahindra,  
 Tech Mahindra, Flextronics etc

*S. Shanthi*  
 PRINCIPAL

**CARE COLLEGE OF ENGINEERING**  
 No. 27, Thayanur, Trichy-620 009.

**Highest Placement  
 Record in Top 5 Engineering  
 Colleges in Trichy**

**Some of Our Recruiters are:**





## Career and Professional Development Courses and Workshops

Auto CAD | 3 D Printing | CNC | Solid Works | Staad Pro | Robotics | IoT  
Arduino | LoRa | VHDL | Cadence | Android | Python | SQL  
Cloud Computing | Big Data Analytics

- World Class Infrastructure
- Offering Quality Education
- Creative Thinking
- Encouraging Innovation
- Providing Multi-Disciplinary Education
- Excellent Hostel & Transport

### CARE Merit Scholarship

+2 Cut Off Marks

- 190 Above - 100% Free
- 180 to 189 - 75% Free
- 170 to 179 - 50% Free

### Under Graduate Courses

B.E : CIVIL CSE ECE MECH

### Post Graduate Courses

Master of Business Administration  
M.E Construction Engg and Management  
M.E Engineering Design

### CARE Clubs

Science | Eco CARE | Literary | Photography | Cultural | Music | NSS



**COUNSELLING CODE**  
**3841**

[www.care.ac.in](http://www.care.ac.in)  
[fb/careschoolofengineering](https://fb/careschoolofengineering)

ADMISSIONS OPEN /  
LATERAL ENTRY SEATS AVAILABLE  
**CALL TO JOIN**

CARE Group of Institutions  
91769 28000 | 91769 45000



**INDEX**

**CRITERION – 1.2.1.**

**TABLE OF CONTENTS**

<b>S. No.</b>	<b>Programme Name</b>	<b>Regulation</b>	<b>Page No.</b>
1	B. Tech. - Artificial Intelligence and Data Science	R-2017 (CBCS)	1
2	B.E. - Civil Engineering	R-2017 (CBCS)	6
3	B.E. - Computer Science and Engineering	R-2017 (CBCS)	14
4	B.E. - Electronics and Communication Engineering	R-2017 (CBCS)	24
5	B.E. - Mechanical Engineering	R-2017 (CBCS)	33
6	M.B.A. - Master of Business Administration	R-2017 (CBCS)	40
7	M.E. - Construction Engineering and Management	R-2017 (CBCS)	47
8	M.E. - Engineering Design	R-2017 (CBCS)	51
9	B.E. - Civil Engineering	R-2013	56
10	B.E. - Computer Science and Engineering	R-2013	60
11	B.E. - Electronics and Communication Engineering	R-2013	65
12	B.E. - Mechanical Engineering	R-2013	71
13	M.B.A. - Master of Business Administration	R-2013	76
14	M.E. - Construction Engineering and Management	R-2013	79
15	M.E. - Engineering Design	R-2013	81



**ANNA UNIVERSITY, CHENNAI**  
**AFFILIATED INSTITUTIONS**  
**B.TECH. ARTIFICIAL INTELLIGENCE AND DATA SCIENCE**  
**REGULATIONS – 2017**  
**CHOICE BASED CREDIT SYSTEM**  
**I - VIII SEMESTERS CURRICULUM**

**SEMESTER I**

Sl. No	COURSE CODE	COURSE TITLE	CATEGORY	CONTACT PERIODS	L	T	P	C
<b>THEORY</b>								
1.	HS8151	Communicative English	HS	4	4	0	0	4
2.	MA8151	Engineering Mathematics – I	BS	4	4	0	0	4
3.	PH8151	Engineering Physics	BS	3	3	0	0	3
4.	CY8151	Engineering Chemistry	BS	3	3	0	0	3
5.	GE8151	Problem Solving and Python Programming	ES	3	3	0	0	3
6.	GE8152	Engineering Graphics	ES	6	2	0	4	4
<b>PRACTICALS</b>								
7.	GE8161	Problem Solving and Python Programming Lab	ES	4	0	0	4	2
8.	BS8161	Physics and Chemistry Lab	BS	4	0	0	4	2
<b>TOTAL</b>				<b>31</b>	<b>19</b>	<b>0</b>	<b>12</b>	<b>25</b>

**SEMESTER II**

Sl.No	COURSE CODE	COURSE TITLE	CATEGORY	CONTACT PERIODS	L	T	P	C
<b>THEORY</b>								
1.	HS8251	Technical English	HS	4	4	0	0	4
2.	MA8252	Linear Algebra	BS	4	4	0	0	4
3.	AD8251	Data Structures Design	PC	3	3	0	0	3
4.	GE8291	Environmental Science and Engineering	BS	3	3	0	0	3
5.	BE8255	Basic Electrical, Electronics, and Measurements Engineering	ES	3	3	0	0	3
6.	AD8252	Digital Principles and Computer Organization	ES	5	3	0	2	4
<b>PRACTICALS</b>								
7.	GE8261	Engineering Practices Lab	ES	4	0	0	4	2
8.	AD8261	Data Structures Design Lab	PC	4	0	0	4	2
<b>TOTAL</b>				<b>30</b>	<b>20</b>	<b>0</b>	<b>10</b>	<b>25</b>



### SEMESTER III

SI. No.	COURSE CODE	COURSE TITLE	CATEGORY	CONTACT PERIODS	L	T	P	C
<b>THEORY</b>								
1.	MA8351	Discrete Mathematics	BS	4	4	0	0	4
2.	AD8301	Introduction to Operating Systems	PC	5	3	0	2	4
3.	AD8302	Fundamentals of Data Science	PC	3	3	0	0	3
4.	CS8392	Object Oriented Programming	PC	3	3	0	0	3
5.	AD8351	Design and Analysis of Algorithms	PC	5	3	0	2	4
<b>PRACTICALS</b>								
6.	AD8311	Data Science Laboratory	PC	4	0	0	4	2
7.	CS8383	Object Oriented Programming Laboratory	PC	4	0	0	4	2
8.	HS8381	Interpersonal Skills/Listening & Speaking	HS	2	0	0	2	1
<b>TOTAL</b>				<b>30</b>	<b>16</b>	<b>0</b>	<b>14</b>	<b>23</b>

### SEMESTER IV

SI. No	COURSE CODE	COURSE TITLE	CATEGORY	CONTACT PERIODS	L	T	P	C
<b>THEORY</b>								
1.	MA8391	Probability and Statistics	BS	4	4	0	0	4
2.	AD8401	Database Design and Management	PC	3	3	0	0	3
3.	AD8402	Artificial Intelligence I	PC	3	3	0	0	3
4.	AD8403	Data Analytics	PC	3	3	0	0	3
5.		Professional Elective I	PE	3	3	0	0	3
<b>PRACTICALS</b>								
6.	AD8411	Database Design and Management Laboratory	PC	4	0	0	4	2
7.	AD8412	Data Analytics Laboratory	PC	4	0	0	4	2
8.	AD8413	Artificial Intelligence – I Laboratory	PC	4	0	0	4	2
9.	HS8461	Advanced Reading and Writing	HS	2	0	0	2	1
<b>TOTAL</b>				<b>30</b>	<b>16</b>	<b>2</b>	<b>14</b>	<b>23</b>



### SEMESTER V

Sl. No.	COURSE CODE	COURSE TITLE	CATEGORY	CONTACT PERIODS	L	T	P	C
<b>THEORY</b>								
1.	AD8501	Optimization Techniques	PC	4	4	0	0	4
2.	CW8691	Computer Networks	PC	5	3	0	2	4
3.	AD8502	Data Exploration and Visualization	PC	5	3	0	2	4
4.	AD8551	Business Analytics	PC	3	3	0	0	3
5.	AD8552	Machine Learning	PC	3	3	0	0	3
6.		Open Elective I	OE	3	3	0	0	3
<b>PRACTICALS</b>								
7.	AD8511	Machine Learning Lab	PC	4	0	0	4	2
8.	AD8512	Mini Project on Data Sciences Pipeline	PC	4	0	0	4	2
<b>TOTAL</b>				<b>31</b>	<b>19</b>	<b>0</b>	<b>12</b>	<b>25</b>

### SEMESTER VI

Sl. No.	COURSE CODE	COURSE TITLE	CATEGORY	CONTACT PERIODS	L	T	P	C
<b>THEORY</b>								
1.	AD8601	Artificial Intelligence II	PC	3	3	0	0	3
2.	AD8602	Data and Information Security	PC	3	3	0	0	3
3.	IT8501	Web Technology	PC	3	3	0	0	3
4.		Professional Elective II	PE	3	3	0	0	3
5.		Professional Elective III	PE	3	3	0	0	3
<b>PRACTICALS</b>								
6.	IT8511	Web Technology Lab	PC	4	0	0	4	2
7.	AD8611	Artificial Intelligence - II Lab	PC	4	0	0	4	2
8.	HS8581	Professional Communication	HS	2	0	0	2	1
9.	AD8612	Socially relevant Project	PC	4	0	0	4	2
<b>TOTAL</b>				<b>29</b>	<b>15</b>	<b>0</b>	<b>14</b>	<b>22</b>



### SEMESTER VII

SI. No	COURSE CODE	COURSE TITLE	CATE GORY	CONTACT PERIODS	L	T	P	C
<b>THEORY</b>								
1.	AD8701	Deep Learning	PC	3	3	0	0	3
2.	AD8702	Text Analytics	PC	3	3	0	0	3
3.	AD8703	Basics of Computer Vision	PC	3	3	0	0	3
4.	AD8704	Big Data Management	PC	5	3	0	2	4
5.	AD8705	AI and Robotics	PC	5	3	0	2	4
6.		Open Elective II	OE	3	3	0	0	3
<b>PRACTICALS</b>								
7.	AD8711	Deep Learning Lab	PC	4	0	0	4	2
8.	AD8712	Mini Project on Analytics	PC	4	0	0	4	2
<b>TOTAL</b>				<b>30</b>	<b>18</b>	<b>0</b>	<b>12</b>	<b>24</b>

### SEMESTER VIII

SI. No.	COURSE CODE	COURSE TITLE	CATE GORY	CONTACT PERIODS	L	T	P	C
<b>THEORY</b>								
1.		Professional Elective IV	PE	3	3	0	0	3
2.		Professional Elective V	PE	3	3	0	0	3
<b>PRACTICALS</b>								
3.	AD8811	Project Work	PC	20	0	0	20	10
<b>TOTAL</b>				<b>26</b>	<b>6</b>	<b>0</b>	<b>20</b>	<b>16</b>

**TOTAL NO. OF CREDITS: 183**

### PROFESSIONAL ELECTIVES (PE)

#### SEMESTER IV, ELECTIVE - I

SI. No	COURSE CODE	COURSE TITLE	CATE GORY	CONTACT PERIODS	L	T	P	C
1.	EC8691	Microprocessors and Microcontrollers	PE	3	3	0	0	3
2.	AD8001	Software Development Processes	PE	3	3	0	0	3
3.	AD8002	Health care Analytics	PE	3	3	0	0	3
4.	AD8003	Mobile Applications Development	PE	3	3	0	0	3
5.	AD8004	Parallel Computing	PE	3	3	0	0	3



**SEMESTER VI, ELECTIVE - II**

SI. No	COURSE CODE	COURSE TITLE	CATE GORY	CONTACT PERIODS	L	T	P	C
1.	AD8005	Embedded Systems and Programming	PE	3	3	0	0	3
2.	CW8591	Software Architecture	PE	3	3	0	0	3
3.	AD8006	Engineering Predictive Analytics	PE	3	3	0	0	3
4.	CS8603	Distributed Systems	PE	3	3	0	0	3
5.	CS8072	Agile Methodologies	PE	3	3	0	0	3

**SEMESTER VI, ELECTIVE - III**

SI. No	COURSE CODE	COURSE TITLE	CATEG ORY	CONTACT PERIODS	L	T	P	C
1.	CS8081	Internet of Things	PE	3	3	0	0	3
2.	AD8007	Software Testing and Quality Assurance	PE	3	3	0	0	3
3.	CS8791	Cloud Computing	PE	3	3	0	0	3
4.	CS8085	Social Network Analytics	PE	3	3	0	0	3
5.	AD8008	Web Services and API Design	PE	3	3	0	0	3

**SEMESTER VIII, ELECTIVE - IV**

SI. No	COURSE CODE	COURSE TITLE	CATEG ORY	CONTACT PERIODS	L	T	P	C
1.	AD8009	Operations and Supply Chain Management	PE	3	3	0	0	3
2.	AD8010	Speech Processing and Analytics	PE	3	3	0	0	3
3.	AD8011	Cyber Security	PE	3	3	0	0	3
4.	AD8012	Nonlinear Optimization	PE	3	3	0	0	3
5.	AD8013	Ethics and AI	PE	3	3	0	0	3

**SEMESTER VIII, ELECTIVE - V**

SI. No	COURSE CODE	COURSE TITLE	CATEGORY	CONTACT PERIODS	L	T	P	C
1.	AD8014	Engineering Economics	PE	3	3	0	0	3
2.	AD8081	Cognitive Science and Analytics	PE	3	3	0	0	3
3.	MG8591	Principles of Management	PE	3	3	0	0	3
4.	AD8015	Bio-inspired Optimization Techniques	PE	3	3	0	0	3
5.	AD8016	Information Extraction and Retrieval	PE	3	3	0	0	3



**ANNA UNIVERSITY, CHENNAI**  
**AFFILIATED INSTITUTIONS**  
**B.E. CIVIL ENGINEERING**  
**REGULATIONS – 2017**  
**CHOICE BASED CREDIT SYSTEM**  
**III TO VIII SEMESTERS CURRICULA & SYLLABI**  
**SEMESTER III**

S.No	COURSE CODE	COURSE TITLE	CATEGORY	CONTACT PERIODS	L	T	P	C
<b>THEORY</b>								
1.	MA8351	Transforms and Partial Differential Equations	BS	4	4	0	0	4
2.	CE8301	Strength of Materials I	PC	3	3	0	0	3
3.	CE8302	Fluid Mechanics	PC	3	3	0	0	3
4.	CE8351	Surveying	PC	3	3	0	0	3
5.	CE8391	Construction Materials	PC	3	3	0	0	3
6.	CE8393	Engineering Geology	ES	3	3	0	0	3
<b>PRACTICALS</b>								
7.	CE8311	Construction Materials Laboratory	PC	4	0	0	4	2
8.	CE8361	Surveying Laboratory	PC	4	0	0	4	2
9.	HS8381	Interpersonal Skills / Listening and Speaking	EEC	2	0	0	2	1
<b>TOTAL</b>				<b>29</b>	<b>19</b>	<b>0</b>	<b>10</b>	<b>24</b>

**SEMESTER IV**

S.No	COURSE CODE	COURSE TITLE	CATEGORY	CONTACT PERIODS	L	T	P	C
<b>THEORY</b>								
1.	MA8491	Numerical Methods	BS	4	4	0	0	4
2.	CE8401	Construction Techniques and Practices	PC	3	3	0	0	3
3.	CE8402	Strength of Materials II	PC	3	3	0	0	3
4.	CE8403	Applied Hydraulic Engineering	PC	3	3	0	0	3
5.	CE8404	Concrete Technology	PC	3	3	0	0	3
6.	CE8491	Soil Mechanics	PC	3	3	0	0	3
<b>PRACTICALS</b>								
7.	CE8481	Strength of Materials Laboratory	PC	4	0	0	4	2
8.	CE8461	Hydraulic Engineering Laboratory	PC	4	0	0	4	2
9.	HS8461	Advanced Reading and Writing	EEC	2	0	0	2	1
<b>TOTAL</b>				<b>29</b>	<b>19</b>	<b>0</b>	<b>10</b>	<b>24</b>

**SEMESTER V**

S.No	COURSE CODE	COURSE TITLE	CATEGORY	CONTACT PERIODS	L	T	P	C
<b>THEORY</b>								
1.	CE8501	Design of Reinforced Cement Concrete Elements	PC	5	3	2	0	4
2.	CE8502	Structural Analysis – I	PC	3	3	0	0	3
3.	EN8491	Water Supply Engineering	PC	3	3	0	0	3
4.	CE8591	Foundation Engineering	PC	3	3	0	0	3
5.		Professional Elective I	PE	3	3	0	0	3
6.		Open Elective I*	OE	3	3	0	0	3
<b>PRACTICALS</b>								
7.	CE8511	Soil Mechanics Laboratory	PC	4	0	0	4	2
8.	CE8611	Water and Waste Water Analysis Laboratory	PC	4	0	0	4	2
9.	CE8512	Survey Camp (2 weeks –During IV Semester)	EEC	0	0	0	0	2
<b>TOTAL</b>				<b>28</b>	<b>18</b>	<b>2</b>	<b>8</b>	<b>25</b>

**SEMESTER VI**

S.No	COURSE CODE	COURSE TITLE	CATEGORY	CONTACT PERIODS	L	T	P	C
<b>THEORY</b>								
1.	CE8601	Design of Steel Structural Elements	PC	5	3	2	0	4
2.	CE8602	Structural Analysis–II	PC	3	3	0	0	3
3.	CE8603	Irrigation Engineering	PC	3	3	0	0	3
4.	EN8591	Wastewater Engineering	PC	3	3	0	0	3
5.	CE8503	Highway Engineering	PC	3	3	0	0	3
6.		Professional Elective II	PE	3	3	0	0	3
<b>PRACTICALS</b>								
7.	CE8513	Highway Engineering Laboratory	PC	4	0	0	4	2
8.	CE8612	Irrigation and Environmental Engineering Drawing	PC	4	0	0	4	2
<b>TOTAL</b>				<b>28</b>	<b>18</b>	<b>2</b>	<b>8</b>	<b>23</b>



**SEMESTER VII**

S.No	COURSE CODE	COURSE TITLE	CATEGORY	CONTACT PERIODS	L	T	P	C
<b>THEORY</b>								
1.	CE8701	Estimation, Costing and Valuation Engineering	PC	3	3	0	0	3
2.	CE8702	Railways, Airports, Docks and Harbour Engineering	PC	3	3	0	0	3
3.	CE8703	Structural Design and Drawing	PC	5	3	0	2	4
4.		Professional Elective III	PE	3	3	0	0	3
5.		Open Elective II*	OE	3	3	0	0	3
<b>PRACTICALS</b>								
6.	CE8711	Creative and Innovative Project (Activity Based - Subject Related)	EEC	4	0	0	4	2
7.	CE8712	Industrial Training (4 weeks During VI Semester – Summer)	EEC	0	0	0	0	2
<b>TOTAL</b>				<b>21</b>	<b>15</b>	<b>0</b>	<b>6</b>	<b>20</b>

**SEMESTER VIII**

S.No	COURSE CODE	COURSE TITLE	CATEGORY	CONTACT PERIODS	L	T	P	C
<b>THEORY</b>								
1.		Professional Elective IV	PE	3	3	0	0	3
2.		Professional Elective V	PE	3	3	0	0	3
<b>PRACTICALS</b>								
3.	CE8811	Project Work	EEC	20	0	0	20	10
<b>TOTAL</b>				<b>26</b>	<b>6</b>	<b>0</b>	<b>20</b>	<b>16</b>

**TOTAL NO. OF CREDITS:182**

\*Course from the curriculum of other UG Programmes.

### HUMANITIES AND SOCIAL SCIENCES (HS)

S.No	COURSE CODE	COURSE TITLE	CATEGORY	CONTACT PERIODS	L	T	P	C
1.		Communicative English	HS	4	4	0	0	4
2.		Technical English	HS	4	4	0	0	4
3.		Environmental Science and Engineering	HS	3	3	0	0	3

### BASIC SCIENCES (BS)

S.No	COURSE CODE	COURSE TITLE	CATEGORY	CONTACT PERIODS	L	T	P	C
1.		Engineering Mathematics – I	BS	4	4	0	0	4
2.		Engineering Physics	BS	3	3	0	0	3
3.		Engineering Chemistry	BS	3	3	0	0	3
4.		Physics and Chemistry Laboratory	BS	4	0	0	4	2
5.		Engineering Mathematics – II	BS	4	4	0	0	4
6.		Physics for Civil Engineering	BS	3	3	0	0	3
7.		Transforms and Partial Differential Equations	BS	4	4	0	0	4
8.		Numerical Methods	BS	4	4	0	0	4

### ENGINEERING SCIENCES (ES)

S.No.	COURSE CODE	COURSE TITLE	CATEGORY	CONTACT PERIODS	L	T	P	C
1.		Problem Solving and Python Programming	ES	3	3	0	0	3
2.		Engineering Graphics	ES	6	2	0	4	4
3.		Problem Solving and Python Programming Laboratory	ES	4	0	0	4	2
4.		Basic Electrical and Electronics Engineering	ES	3	3	0	0	3
5.		Engineering Mechanics	ES	5	3	2	0	4
6.		Engineering Practices Laboratory	ES	4	0	0	4	2
7.		Engineering Geology	ES	3	3	0	0	3

### PROFESSIONAL CORE (PC)

S.No	COURSE CODE	COURSE TITLE	CATEGORY	CONTACT PERIODS	L	T	P	C
1.		Computer Aided Building Drawing	PC	4	0	0	4	2
2.		Construction Materials	PC	3	3	0	0	3
3.		Fluid Mechanics	PC	3	3	0	0	3
4.		Surveying	PC	3	3	0	0	3
5.		Strength of Materials–I	PC	3	3	0	0	3



6.		Strength of Materials Laboratory	PC	4	0	0	4	2
7.		Surveying Laboratory	PC	4	0	0	4	2
8.		Construction Materials Laboratory	PC	4	0	0	4	2
9.		Construction Techniques and Practices	PC	3	3	0	0	3
10.		Strength of Materials II	PC	3	3	0	0	3
11.		Applied Hydraulic Engineering	PC	3	3	0	0	3
12.		Concrete Technology	PC	3	3	0	0	3
13.		Soil Mechanics	PC	3	3	0	0	3
14.		Hydraulic Engineering Laboratory	PC	4	0	0	4	2
15.		Design of Reinforced Cement Concrete Elements	PC	5	3	2	0	4
16.		Foundation Engineering	PC	3	3	0	0	3
17.		Structural Analysis – I	PC	3	3	0	0	3
18.		Highway Engineering	PC	3	3	0	0	3
19.		Highway Engineering Laboratory	PC	4	0	0	4	2
20.		Design of Steel Structural Elements	PC	5	3	2	0	4
21.		Structural Analysis–II	PC	3	3	0	0	3
22.		Structural Design and Drawing	PC	5	3	0	2	4
23.		Irrigation Engineering	PC	3	3	0	0	3
24.		Water Supply Engineering	PC	3	3	0	0	3
25.		Irrigation and Environmental Engineering Drawing	PC	4	0	0	4	2
26.		Estimation, Costing and Valuation Engineering	PC	3	3	0	0	3
27.		Wastewater Engineering	PC	3	3	0	0	3
28.		Railways, Airports, Docks and Harbour Engineering	PC	3	3	0	0	3
29.		Water and Waste Water Analysis Laboratory	PC	4	0	0	4	2
30.		Soil Mechanics Laboratory	PC	4	0	0	4	2

**EMPLOYABILITY ENHANCEMENT COURSES (EEC)**

S.No	COURSE CODE	COURSE TITLE	CATEGORY	CONTACT PERIODS	L	T	P	C
1.		Interpersonal Skills / Listening and Speaking	EEC	2	0	0	2	1
2.		Advanced Reading and Writing	EEC	2	0	0	2	1
3.		Survey Camp (2 weeks – During IV Semester)	EEC	0	0	0	0	2
4.		Creative and Innovative Project (Activity Based - Subject Related)	EEC	4	0	0	4	2
5.		Industrial Training (4 weeks During VI Semester – Summer)	EEC	0	0	0	0	2
6.		Project Work	EEC	20	0	0	20	10

**PROFESSIONAL ELECTIVE  
SEMESTER V  
ELECTIVE - I**

S.No.	COURSE CODE	COURSE TITLE	CATEGORY	CONTACT PERIODS	L	T	P	C
1.	GI8012	Digital Cadastre	PE	3	3	0	0	3
2.	GI8013	Advanced Surveying	PE	3	3	0	0	3
3.	GI	Total Station and GPS Surveying	PE	3	3	0	0	3
4.	GI8015	Geographic Information System	PE	3	3	0	0	3
5.	GI8016	Geoinformatics Applications for Civil Engineers	PE	3	3	0	0	3
6.	GE8071	Professional Ethics in Engineering	PE	3	3	0	0	3
7.	GE8072	Human Rights	PE	3	3	0	0	3

**SEMESTER VI  
ELECTIVE - II**

S.No.	COURSE CODE	COURSE TITLE	CATEGORY	CONTACT PERIODS	L	T	P	C
1.	CE8001	Ground Improvement Techniques	PE	3	3	0	0	3
2.	CE8002	Introduction to Soil Dynamics and Machine Foundations	PE	3	3	0	0	3
3.	CE8003	Rock Engineering	PE	3	3	0	0	3
4.	CE8004	Urban Planning and Development	PE	3	3	0	0	3
5.	CE8005	Air Pollution and Control Engineering	PE	3	3	0	0	3
6.	GE8073	Intellectual Property Rights	PE	3	3	0	0	3



**SEMESTER VII  
ELECTIVE – III**

S.No.	COURSE CODE	COURSE TITLE	CATEGORY	CONTACT PERIODS	L	T	P	C
1.	CE8006	Pavement Engineering	PE	3	3	0	0	3
2.	CE8007	Traffic Engineering and Management	PE	3	3	0	0	3
3.	CE8008	Transport and Environment	PE	3	3	0	0	3
4.	CE8009	Industrial Structures	PE	3	3	0	0	3
5.	CE8010	Environmental and Social Impact Assessment	PE	3	3	0	0	3
6.	CE8019	Design of Prestressed Concrete Structures	PE	3	3	0	0	3
7.	CE8011	Construction Planning and Scheduling	PE	3	3	0	0	3
8.	EN8592	Municipal Solid Waste Management	PE	3	3	0	0	3
9.	GE8074	Disaster Management	PE	3	3	0	0	3

**SEMESTER VIII  
ELECTIVE – IV**

S.No.	COURSE CODE	COURSE TITLE	CATEGORY	CONTACT PERIODS	L	T	P	C
1.	CE8012	Coastal Engineering	PE	3	3	0	0	3
2.	CE8013	Participatory Water Resources Management	PE	3	3	0	0	3
3.	CE8014	Integrated Water Resources Management	PE	3	3	0	0	3
4.	CE8015	Groundwater Engineering	PE	3	3	0	0	3
5.	CE8016	Water Resources Systems Engineering	PE	3	3	0	0	3
6.	CE8017	Geo-Environmental Engineering	PE	3	3	0	0	3
7.	CE8091	Hydrology and Water Resources Engineering	PE	3	3	0	0	3
8.	GE8075	Total Quality Management	PE	3	3	0	0	3

**SEMESTER VIII  
ELECTIVE – V**

S.No.	COURSE CODE	COURSE TITLE	CATEGORY	CONTACT PERIODS	L	T	P	C
1.	CE8018	Computer Aided Design of Structures	PE	3	3	0	0	3
2.	CE8020	Maintenance, Repair and Rehabilitation of Structures	PE	3	3	0	0	3
3.	CE8021	Structural Dynamics and Earthquake Engineering	PE	3	3	0	0	3
4.	CE8022	Prefabricated Structures	PE	3	3	0	0	3
5.	CE8023	Bridge Engineering	PE	3	3	0	0	3
6.	GE8076	Fundamentals of Nano Science	PE	3	3	0	0	3

**B.E. CIVIL ENGINEERING  
(Offered by Other Branches)**

1.	ME4	Energy Conservation and Management	OE	3	3	0	0	3
2.	ME3	Industrial Safety	OE	3	3	0	0	3
3.	MD2	Measurement and Instrumentation	OE	3	3	0	0	3
4.	CS8	Programming in C	OE	3	3	0	0	3
5.	RO1	Renewable Energy Sources	OE	3	3	0	0	3
6.	IE1	Robotics	OE	3	3	0	0	3
7.	ML2	Selection of Materials	OE	3	3	0	0	3
8.	AN2	Sensors and Transducers	OE	3	3	0	0	3
9.	CS4	Software Engineering	OE	3	3	0	0	3
10.	ML3	Testing of Materials	OE	3	3	0	0	3
11.	RO4	Vibration and Noise Control	OE	3	3	0	0	3
12.	CH1	Industrial Nanotechnology	OE	3	3	0	0	3
13.	TT4	Textile effluent treatments.	OE	3	3	0	0	3
14.	AI 2	Environment and Agriculture	OE	3	3	0	0	3
15.	AI 4	Agricultural Finance, Banking and Co-operation	OE	3	3	0	0	3
16.	AI 5	Production Technology of Agricultural machinery	OE	3	3	0	0	3
17.	EN 1	Green Building Design	OE	3	3	0	0	3
18.	GI 1	Planetary Remote Sensing	OE	3	3	0	0	3
19.	GI 2	Climate Change Studies	OE	3	3	0	0	3

**OPEN ELECTIVES  
(Offered to Other Branches)**

S.No	COURSE CODE	COURSE TITLE	CATEGORY	CONTACT PERIODS	L	T	P	C
1.	CE1	Air Pollution and Control Engineering	OE	3	3	0	0	3
2.	CE2	Environmental and Social Impact Assessment	OE	3	3	0	0	3
3.	CE3	Geographic Information System	OE	3	3	0	0	3



**ANNA UNIVERSITY, CHENNAI**  
**AFFILIATED INSTITUTIONS**  
**B.E. COMPUTER SCIENCE AND ENGINEERING**  
**REGULATIONS – 2017**  
**CHOICE BASED CREDIT SYSTEM**  
**I - VIII SEMESTERS CURRICULA AND SYLLABI**

**SEMESTER I**

Sl. No	COURSE CODE	COURSE TITLE	CATEGORY	CONTACT PERIODS	L	T	P	C
<b>THEORY</b>								
1.	HS8151	Communicative English	HS	4	4	0	0	4
2.	MA8151	Engineering Mathematics - I	BS	4	4	0	0	4
3.	PH8151	Engineering Physics	BS	3	3	0	0	3
4.	CY8151	Engineering Chemistry	BS	3	3	0	0	3
5.	GE8151	Problem Solving and Python Programming	ES	3	3	0	0	3
6.	GE8152	Engineering Graphics	ES	6	2	0	4	4
<b>PRACTICALS</b>								
7.	GE8161	Problem Solving and Python Programming Laboratory	ES	4	0	0	4	2
8.	BS8161	Physics and Chemistry Laboratory	BS	4	0	0	4	2
<b>TOTAL</b>				<b>31</b>	<b>19</b>	<b>0</b>	<b>12</b>	<b>25</b>

**SEMESTER II**

Sl.No	COURSE CODE	COURSE TITLE	CATEGORY	CONTACT PERIODS	L	T	P	C
<b>THEORY</b>								
1.	HS8251	Technical English	HS	4	4	0	0	4
2.	MA8251	Engineering Mathematics - II	BS	4	4	0	0	4
3.	PH8252	Physics for Information Science	BS	3	3	0	0	3
4.	BE8255	Basic Electrical, Electronics and Measurement Engineering	ES	3	3	0	0	3
5.	GE8291	Environmental Science and Engineering	HS	3	3	0	0	3
6.	CS8251	Programming in C	PC	3	3	0	0	3
<b>PRACTICALS</b>								
7.	GE8261	Engineering Practices Laboratory	ES	4	0	0	4	2
8.	CS8261	C Programming Laboratory	PC	4	0	0	4	2
<b>TOTAL</b>				<b>28</b>	<b>20</b>	<b>0</b>	<b>8</b>	<b>24</b>

**SEMESTER III**

SI.No	COURSE CODE	COURSE TITLE	CATEGORY	CONTACT PERIODS	L	T	P	C
<b>THEORY</b>								
1.	MA8351	Discrete Mathematics	BS	4	4	0	0	4
2.	CS8351	Digital Principles and System Design	ES	4	4	0	0	4
3.	CS8391	Data Structures	PC	3	3	0	0	3
4.	CS8392	Object Oriented Programming	PC	3	3	0	0	3
5.	EC8395	Communication Engineering	ES	3	3	0	0	3
<b>PRACTICALS</b>								
6.	CS8381	Data Structures Laboratory	PC	4	0	0	4	2
7.	CS8383	Object Oriented Programming Laboratory	PC	4	0	0	4	2
8.	CS8382	Digital Systems Laboratory	ES	4	0	0	4	2
9.	HS8381	Interpersonal Skills/Listening & Speaking	EEC	2	0	0	2	1
<b>TOTAL</b>				<b>31</b>	<b>17</b>	<b>0</b>	<b>14</b>	<b>24</b>

**SEMESTER IV**

SI. No	COURSE CODE	COURSE TITLE	CATEGORY	CONTACT PERIODS	L	T	P	C
<b>THEORY</b>								
1.	MA8402	Probability and Queueing Theory	BS	4	4	0	0	4
2.	CS8491	Computer Architecture	PC	3	3	0	0	3
3.	CS8492	Database Management Systems	PC	3	3	0	0	3
4.	CS8451	Design and Analysis of Algorithms	PC	3	3	0	0	3
5.	CS8493	Operating Systems	PC	3	3	0	0	3
6.	CS8494	Software Engineering	PC	3	3	0	0	3
<b>PRACTICALS</b>								
7.	CS8481	Database Management Systems Laboratory	PC	4	0	0	4	2
8.	CS8461	Operating Systems Laboratory	PC	4	0	0	4	2
9.	HS8461	Advanced Reading and Writing	EEC	2	0	0	2	1
<b>TOTAL</b>				<b>29</b>	<b>19</b>	<b>0</b>	<b>10</b>	<b>24</b>



**SEMESTER V**

Sl. No	COURSE CODE	COURSE TITLE	CATEGORY	CONTACT PERIODS	L	T	P	C
<b>THEORY</b>								
1.	MA8551	Algebra and Number Theory	BS	4	4	0	0	4
2.	CS8591	Computer Networks	PC	3	3	0	0	3
3.	EC8691	Microprocessors and Microcontrollers	PC	3	3	0	0	3
4.	CS8501	Theory of Computation	PC	3	3	0	0	3
5.	CS8592	Object Oriented Analysis and Design	PC	3	3	0	0	3
6.		Open Elective I	OE	3	3	0	0	3
<b>PRACTICALS</b>								
7.	EC8681	Microprocessors and Microcontrollers Laboratory	PC	4	0	0	4	2
8.	CS8582	Object Oriented Analysis and Design Laboratory	PC	4	0	0	4	2
9.	CS8581	Networks Laboratory	PC	4	0	0	4	2
<b>TOTAL</b>				<b>31</b>	<b>19</b>	<b>0</b>	<b>12</b>	<b>25</b>

**SEMESTER VI**

Sl. No	COURSE CODE	COURSE TITLE	CATEGORY	CONTACT PERIODS	L	T	P	C
<b>THEORY</b>								
1.	CS8651	Internet Programming	PC	3	3	0	0	3
2.	CS8691	Artificial Intelligence	PC	3	3	0	0	3
3.	CS8601	Mobile Computing	PC	3	3	0	0	3
4.	CS8602	Compiler Design	PC	5	3	0	2	4
5.	CS8603	Distributed Systems	PC	3	3	0	0	3
6.		Professional Elective I	PE	3	3	0	0	3
<b>PRACTICALS</b>								
7.	CS8661	Internet Programming Laboratory	PC	4	0	0	4	2
8.	CS8662	Mobile Application Development Laboratory	PC	4	0	0	4	2
9.	CS8611	Mini Project	EEC	2	0	0	2	1
10.	HS8581	Professional Communication	EEC	2	0	0	2	1
<b>TOTAL</b>				<b>32</b>	<b>18</b>	<b>0</b>	<b>14</b>	<b>25</b>

### SEMESTER VII

SI. No	COURSE CODE	COURSE TITLE	CATEGORY	CONTACT PERIODS	L	T	P	C
<b>THEORY</b>								
1.	MG8591	Principles of Management	HS	3	3	0	0	3
2.	CS8792	Cryptography and Network Security	PC	3	3	0	0	3
3.	CS8791	Cloud Computing	PC	3	3	0	0	3
4.		Open Elective II	OE	3	3	0	0	3
5.		Professional Elective II	PE	3	3	0	0	3
6.		Professional Elective III	PE	3	3	0	0	3
<b>PRACTICALS</b>								
7.	CS8711	Cloud Computing Laboratory	PC	4	0	0	4	2
8.	IT8761	Security Laboratory	PC	4	0	0	4	2
<b>TOTAL</b>				<b>26</b>	<b>18</b>	<b>0</b>	<b>8</b>	<b>22</b>

### SEMESTER VIII

SI. No	COURSE CODE	COURSE TITLE	CATEGORY	CONTACT PERIODS	L	T	P	C
<b>THEORY</b>								
1.		Professional Elective IV	PE	3	3	0	0	3
2.		Professional Elective V	PE	3	3	0	0	3
<b>PRACTICALS</b>								
3.	CS8811	Project Work	EEC	20	0	0	20	10
<b>TOTAL</b>				<b>26</b>	<b>6</b>	<b>0</b>	<b>20</b>	<b>16</b>

**TOTAL NO. OF CREDITS: 185**



### HUMANITIES AND SOCIAL SCIENCES (HS)

SI. NO	COURSE CODE	COURSE TITLE	CATEGORY	CONTACT PERIODS	L	T	P	C
1.	HS8151	Communicative English	HS	4	4	0	0	4
2.	HS8251	Technical English	HS	4	4	0	0	4
3.	GE8291	Environmental Science and Engineering	HS	3	3	0	0	3
4.	MG8591	Principles of Management	HS	3	3	0	0	3

### BASIC SCIENCES (BS)

SI. NO	COURSE CODE	COURSE TITLE	CATEGORY	CONTACT PERIODS	L	T	P	C
1.	MA8151	Engineering Mathematics I	BS	4	4	0	0	4
2.	PH8151	Engineering Physics	BS	3	3	0	0	3
3.	CY8151	Engineering Chemistry	BS	3	3	0	0	3
4.	BS8161	Physics and Chemistry Laboratory	BS	4	0	0	4	2
5.	MA8251	Engineering Mathematics II	BS	4	4	0	0	4
6.	PH8252	Physics for Information Science	BS	3	3	0	0	3
7.	MA8351	Discrete Mathematics	BS	4	4	0	0	4
8.	MA8402	Probability and Queueing Theory	BS	4	4	0	0	4
9.	MA8551	Algebra and Number Theory	BS	4	4	0	0	4

### ENGINEERING SCIENCES (ES)

SI. NO	COURSE CODE	COURSE TITLE	CATEGORY	CONTACT PERIODS	L	T	P	C
1.	GE8151	Problem Solving and Python Programming	ES	3	3	0	0	3
2.	GE8152	Engineering Graphics	ES	6	2	0	4	4
3.	GE8161	Problem Solving and Python Programming Laboratory	ES	4	0	0	4	2
4.	BE8255	Basic Electrical, Electronics and Measurement Engineering	ES	3	3	0	0	3
5.	GE8261	Engineering Practices Laboratory	ES	4	0	0	4	2
6.	CS8351	Digital Principles and System Design	ES	4	4	0	0	4
7.	EC8395	Communication Engineering	ES	3	3	0	0	3
8.	CS8382	Digital Systems Laboratory	ES	4	0	0	4	2

**PROFESSIONAL CORE (PC)**

SI. NO	COURSE CODE	COURSE TITLE	CATEGORY	CONTACT PERIODS	L	T	P	C
1.	CS8251	Programming in C	PC	3	3	0	0	3
2.	CS8261	C Programming Laboratory	PC	4	0	0	4	2
3.	CS8391	Data Structures	PC	3	3	0	0	3
4.	CS8392	Object Oriented Programming	PC	3	3	0	0	3
5.	CS8381	Data Structures Laboratory	PC	4	0	0	4	2
6.	CS8383	Object Oriented Programming Laboratory	PC	4	0	0	4	2
7.	CS8491	Computer Architecture	PC	3	3	0	0	3
8.	CS8492	Database Management Systems	PC	3	3	0	0	3
9.	CS8451	Design and Analysis of Algorithms	PC	3	3	0	0	3
10.	CS8493	Operating Systems	PC	3	3	0	0	3
11.	CS8494	Software Engineering	PC	3	3	0	0	3
12.	CS8481	Database Management Systems Laboratory	PC	4	0	0	4	2
13.	CS8461	Operating Systems Laboratory	PC	4	0	0	4	2
14.	CS8591	Computer Networks	PC	3	3	0	0	3
15.	EC8691	Microprocessors and Microcontrollers	PC	3	3	0	0	3
16.	CS8501	Theory of Computation	PC	3	3	0	0	3
17.	CS8592	Object Oriented Analysis and Design	PC	3	3	0	0	3
18.	EC8681	Microprocessors and Microcontrollers Laboratory	PC	4	0	0	4	2
19.	CS8582	Object Oriented Analysis and Design Laboratory	PC	4	0	0	4	2
20.	CS8581	Networks Laboratory	PC	4	0	0	4	2
21.	CS8651	Internet Programming	PC	3	3	0	0	3
22.	CS8691	Artificial Intelligence	PC	3	3	0	0	3
23.	CS8601	Mobile Computing	PC	3	3	0	0	3
24.	CS8602	Compiler Design	PC	5	3	0	2	4
25.	CS8603	Distributed Systems	PC	3	3	0	0	3
26.	CS8661	Internet Programming Laboratory	PC	4	0	0	4	2
27.	CS8662	Mobile Application Development Laboratory	PC	4	0	0	4	2
28.	CS8792	Cryptography and Network Security	PC	3	3	0	0	3
29.	CS8791	Cloud Computing	PC	3	3	0	0	3
30.	CS8711	Cloud Computing Laboratory	PC	4	0	0	4	2
31.	IT8761	Security Laboratory	PC	4	0	0	4	2

**PROFESSIONAL ELECTIVES (PE)****SEMESTER VI  
ELECTIVE - I**

Sl. No	COURSE CODE	COURSE TITLE	CATEGORY	CONTACT PERIODS	L	T	P	C
1.	CS8075	Data Warehousing and Data Mining	PE	3	3	0	0	3
2.	IT8076	Software Testing	PE	3	3	0	0	3
3.	IT8072	Embedded Systems	PE	3	3	0	0	3
4.	CS8072	Agile Methodologies	PE	3	3	0	0	3
5.	CS8077	Graph Theory and Applications-	PE	3	3	0	0	3
6.	IT8071	Digital Signal Processing	PE	3	3	0	0	3
7.	GE8075	Intellectual Property Rights	PE	3	3	0	0	3

**SEMESTER VII  
ELECTIVE - II**

Sl. No	COURSE CODE	COURSE TITLE	CATEGORY	CONTACT PERIODS	L	T	P	C
1.	CS8091	Big Data Analytics	PE	3	3	0	0	3
2.	CS8082	Machine Learning Techniques	PE	3	3	0	0	3
3.	CS8092	Computer Graphics and Multimedia	PE	3	3	0	0	3
4.	IT8075	Software Project Management	PE	3	3	0	0	3
5.	CS8081	Internet of Things	PE	3	3	0	0	3
6.	IT8074	Service Oriented Architecture	PE	3	3	0	0	3
7.	GE8077	Total Quality Management	PE	3	3	0	0	3

**SEMESTER VII  
ELECTIVE - III**

Sl. No	COURSE CODE	COURSE TITLE	CATEGORY	CONTACT PERIODS	L	T	P	C
1.	CS8083	Multi-core Architectures and Programming	PE	3	3	0	0	3
2.	CS8079	Human Computer Interaction	PE	3	3	0	0	3
3.	CS8073	C# and .Net Programming	PE	3	3	0	0	3
4.	CS8088	Wireless Adhoc and Sensor Networks	PE	3	3	0	0	3
5.	CS8071	Advanced Topics on Databases	PE	3	3	0	0	3
6.	GE8072	Foundation Skills in Integrated Product Development	PE	3	3	0	0	3
7.	GE8074	Human Rights	PE	3	3	0	0	3
8.	GE8071	Disaster Management	PE	3	3	0	0	3



**SEMESTER VIII  
ELECTIVE - IV**

SI. No	COURSE CODE	COURSE TITLE	CATEGORY	CONTACT PERIODS	L	T	P	C
1.	EC8093	Digital Image Processing	PE	3	3	0	0	3
2.	CS8085	Social Network Analysis	PE	3	3	0	0	3
3.	IT8073	Information Security	PE	3	3	0	0	3
4.	CS8087	Software Defined Networks	PE	3	3	0	0	3
5.	CS8074	Cyber Forensics	PE	3	3	0	0	3
6.	CS8086	Soft Computing	PE	3	3	0	0	3
7.	GE8076	Professional Ethics in Engineering	PE	3	3	0	0	3

**SEMESTER VIII  
ELECTIVE - V**

SI. No	COURSE CODE	COURSE TITLE	CATEGORY	CONTACT PERIODS	L	T	P	C
1.	CS8080	Information Retrieval Techniques	PE	3	3	0	0	3
2.	CS8078	Green Computing	PE	3	3	0	0	3
3.	CS8076	GPU Architecture and Programming	PE	3	3	0	0	3
4.	CS8084	Natural Language Processing	PE	3	3	0	0	3
5.	CS8001	Parallel Algorithms	PE	3	3	0	0	3
6.	IT8077	Speech Processing	PE	3	3	0	0	3
7.	GE8073	Fundamentals of Nano Science	PE	3	3	0	0	3

**EMPLOYABILITY ENHANCEMENT COURSES (EEC)**

SI. NO	COURSE CODE	COURSE TITLE	CATEGORY	CONTACT PERIODS	L	T	P	C
1.	HS8381	Interpersonal Skills/Listening & Speaking	EEC	2	0	0	2	1
2.	HS8461	Advanced Reading and Writing	EEC	2	0	0	2	1
3.	CS8611	Mini Project	EEC	2	0	0	2	1
4.	HS8581	Professional Communication	EEC	2	0	0	2	1
5.	CS8811	Project Work	EEC	20	0	0	20	10

**ANNA UNIVERSITY, CHENNAI**  
**AFFILIATED INSTITUTIONS**  
**B.E. COMPUTER SCIENCE AND ENGINEERING**  
**REGULATIONS – 2017**  
**CHOICE BASED CREDIT SYSTEM**

**OPEN ELECTIVES (Offered by Other Branches)**

**SEMESTER V**  
**OPEN ELECTIVE - I**

SL NO.	COURSE CODE	COURSE TITLE	CATEGORY	CONTACT PERIODS	L	T	P	C
1.	OCE551	Air Pollution and Control Engineering	OE	3	3	0	0	3
2.	OMD551	Basic of Biomedical Instrumentation	OE	3	3	0	0	3
3.	OBT552	Basics of Bioinformatics	OE	3	3	0	0	3
4.	OBM551	Bio Chemistry	OE	3	3	0	0	3
5.	OTL552	Digital Audio Engineering	OE	3	3	0	0	3
6.	OME551	Energy Conservation and Management	OE	3	3	0	0	3
7.	OBT553	Fundamentals of Nutrition	OE	3	3	0	0	3
8.	OCE552	Geographic Information System	OE	3	3	0	0	3
9.	OPY551	Herbal Technology	OE	3	3	0	0	3
10.	OMD552	Hospital Waste Management	OE	3	3	0	0	3
11.	OCH551	Industrial Nanotechnology	OE	3	3	0	0	3
12.	OBT551	Introduction to Bioenergy and Biofuels	OE	3	3	0	0	3
13.	OME553	Industrial Safety Engineering	OE	3	3	0	0	3
14.	OEI551	Logic and Distributed Control Systems	OE	3	3	0	0	3
15.	OBM552	Medical Physics	OE	3	3	0	0	3
16.	OML552	Microscopy	OE	3	3	0	0	3
17.	OBT554	Principles of Food Preservation	OE	3	3	0	0	3
18.	OMF551	Product Design and Development	OE	3	3	0	0	3
19.	OAN551	Sensors and Transducers	OE	3	3	0	0	3
20.	OTL551	Space Time Wireless Communication	OE	3	3	0	0	3
21.	OEC552	Soft Computing	OE	3	3	0	0	3
22.	OTL553	Telecommunication Network Management	OE	3	3	0	0	3
23.	OMD553	Telehealth Technology	OE	3	3	0	0	3
24.	OTL554	Wavelets and its Applications	OE	3	3	0	0	3
25.	OIM551	World Class Manufacturing	OE	3	3	0	0	3

**SEMESTER VII**  
**OPEN ELECTIVE - II**

SL NO.	COURSE CODE	COURSE TITLE	CATEGORY	CONTACT PERIODS	L	T	P	C
1.	OAI751	Agricultural Finance, Banking and Co-operation	OE	3	3	0	0	3
2.	OEE751	Basic Circuit Theory	OE	3	3	0	0	3
3.	OBM751	Basics of Human Anatomy and Physiology	OE	3	3	0	0	3
4.	OGI751	Climate Change and its Impact	OE	3	3	0	0	3
5.	OPY751	Clinical Trials	OE	3	3	0	0	3
6.	OEC751	Electronic Devices	OE	3	3	0	0	3
7.	OML752	Electronic Materials	OE	3	3	0	0	3
8.	OCH752	Energy Technology	OE	3	3	0	0	3
9.	OCE751	Environmental and Social Impact Assessment	OE	3	3	0	0	3
10.	OGI752	Fundamentals of Planetary Remote Sensing	OE	3	3	0	0	3
11.	OEN751	Green Building Design	OE	3	3	0	0	3
12.	OBM752	Hospital Management	OE	3	3	0	0	3
13.	OEE752	Introduction to Renewable Energy Systems	OE	3	3	0	0	3
14.	OBT753	Introduction of Cell Biology	OE	3	3	0	0	3
15.	OMF751	Lean Six Sigma	OE	3	3	0	0	3
16.	OAN751	Low Cost Automation	OE	3	3	0	0	3
17.	OEC754	Medical Electronics	OE	3	3	0	0	3
18.	OEC756	MEMS and NEMS	OE	3	3	0	0	3
19.	OBT752	Microbiology	OE	3	3	0	0	3
20.	OCH751	Process Modeling and Simulation	OE	3	3	0	0	3
21.	OIE751	Robotics	OE	3	3	0	0	3
22.	OEC753	Signals and Systems	OE	4	4	0	0	4
23.	OME752	Supply Chain Management	OE	3	3	0	0	3
24.	OME753	Systems Engineering	OE	3	3	0	0	3
25.	OTL751	Telecommunication System Modeling and Simulation	OE	3	3	0	0	3
26.	OCY751	Waste Water Treatment	OE	3	3	0	0	3



**ANNA UNIVERSITY, CHENNAI**  
**AFFILIATED INSTITUTIONS**  
**B.E. ELECTRONICS AND COMMUNICATION ENGINEERING**  
**REGULATIONS – 2017**  
**CHOICE BASED CREDIT SYSTEM**  
**I - VIII SEMESTERS CURRICULA AND SYLLABI**

**SEMESTER I**

SI. No	COURSE CODE	COURSE TITLE	CATEGORY	CONTACT PERIODS	L	T	P	C
<b>THEORY</b>								
1.	HS8151	Communicative English	HS	4	4	0	0	4
2.	MA8151	Engineering Mathematics - I	BS	4	4	0	0	4
3.	PH8151	Engineering Physics	BS	3	3	0	0	3
4.	CY8151	Engineering Chemistry	BS	3	3	0	0	3
5.	GE8151	Problem Solving and Python Programming	ES	3	3	0	0	3
6.	GE8152	Engineering Graphics	ES	6	2	0	4	4
<b>PRACTICALS</b>								
7.	GE8161	Problem Solving and Python Programming Laboratory	ES	4	0	0	4	2
8.	BS8161	Physics and Chemistry Laboratory	BS	4	0	0	4	2
<b>TOTAL</b>				<b>31</b>	<b>19</b>	<b>0</b>	<b>12</b>	<b>25</b>

**SEMESTER II**

SI. No	COURSE CODE	COURSE TITLE	CATEGORY	CONTACT PERIODS	L	T	P	C
<b>THEORY</b>								
1.	HS8251	Technical English	HS	4	4	0	0	4
2.	MA8251	Engineering Mathematics - II	BS	4	4	0	0	4
3.	PH8253	Physics for Electronics Engineering	BS	3	3	0	0	3
4.	BE8254	Basic Electrical and Instrumentation Engineering	ES	3	3	0	0	3
5.	EC8251	Circuit Analysis	PC	4	4	0	0	4
6.	EC8252	Electronic Devices	PC	3	3	0	0	3
<b>PRACTICALS</b>								
7.	EC8261	Circuits and Devices Laboratory	PC	4	0	0	4	2
8.	GE8261	Engineering Practices Laboratory	ES	4	0	0	4	2
<b>TOTAL</b>				<b>29</b>	<b>21</b>	<b>0</b>	<b>8</b>	<b>25</b>

### SEMESTER III

SI. No	COURSE CODE	COURSE TITLE	CATEGORY	CONTACT PERIODS	L	T	P	C
<b>THEORY</b>								
1.	MA8352	Linear Algebra and Partial Differential Equations	BS	4	4	0	0	4
2.	EC8393	Fundamentals of Data Structures In C	ES	3	3	0	0	3
3.	EC8351	Electronic Circuits- I	PC	3	3	0	0	3
4.	EC8352	Signals and Systems	PC	4	4	0	0	4
5.	EC8392	Digital Electronics	PC	3	3	0	0	3
6.	EC8391	Control Systems Engineering	PC	3	3	0	0	3
<b>PRACTICALS</b>								
7.	EC8381	Fundamentals of Data Structures in C Laboratory	ES	4	0	0	4	2
8.	EC8361	Analog and Digital Circuits Laboratory	PC	4	0	0	4	2
9.	HS8381	Interpersonal Skills/Listening &Speaking	EEC	2	0	0	2	1
<b>TOTAL</b>				<b>30</b>	<b>20</b>	<b>0</b>	<b>10</b>	<b>25</b>

### SEMESTER IV

SI. No	COURSE CODE	COURSE TITLE	CATEGORY	CONTACT PERIODS	L	T	P	C
<b>THEORY</b>								
1.	MA8451	Probability and Random Processes	BS	4	4	0	0	4
2.	EC8452	Electronic Circuits II	PC	3	3	0	0	3
3.	EC8491	Communication Theory	PC	3	3	0	0	3
4.	EC8451	Electromagnetic Fields	PC	4	4	0	0	4
5.	EC8453	Linear Integrated Circuits	PC	3	3	0	0	3
6.	GE8291	Environmental Science and Engineering	HS	3	3	0	0	3
<b>PRACTICALS</b>								
7.	EC8461	Circuits Design and Simulation Laboratory	PC	4	0	0	4	2
8.	EC8462	Linear Integrated Circuits Laboratory	PC	4	0	0	4	2
<b>TOTAL</b>				<b>28</b>	<b>20</b>	<b>0</b>	<b>8</b>	<b>24</b>

### SEMESTER V

Sl. No	COURSE CODE	COURSE TITLE	CATEGORY	CONTACT PERIODS	L	T	P	C
<b>THEORY</b>								
1.	EC8501	Digital Communication	PC	3	3	0	0	3
2.	EC8553	Discrete-Time Signal Processing	PC	4	4	0	0	4
3.	EC8552	Computer Architecture and Organization	PC	3	3	0	0	3
4.	EC8551	Communication Networks	PC	3	3	0	0	3
5.		Professional Elective I	PE	3	3	0	0	3
6.		Open Elective I	OE	3	3	0	0	3
<b>PRACTICALS</b>								
7.	EC8562	Digital Signal Processing Laboratory	PC	4	0	0	4	2
8.	EC8561	Communication Systems Laboratory	PC	4	0	0	4	2
9.	EC8563	Communication Networks Laboratory	PC	4	0	0	4	2
<b>TOTAL</b>				<b>31</b>	<b>19</b>	<b>0</b>	<b>12</b>	<b>25</b>

### SEMESTER VI

Sl. No	COURSE CODE	COURSE TITLE	CATEGORY	CONTACT PERIODS	L	T	P	C
<b>THEORY</b>								
1.	EC8691	Microprocessors and Microcontrollers	PC	3	3	0	0	3
2.	EC8095	VLSI Design	PC	3	3	0	0	3
3.	EC8652	Wireless Communication	PC	3	3	0	0	3
4.	MG8591	Principles of Management	HS	3	3	0	0	3
5.	EC8651	Transmission Lines and RF Systems	PC	3	3	0	0	3
6.		Professional Elective -II	PE	3	3	0	0	3
<b>PRACTICALS</b>								
7.	EC8681	Microprocessors and Microcontrollers Laboratory	PC	4	0	0	4	2
8.	EC8661	VLSI Design Laboratory	PC	4	0	0	4	2
9.	EC8611	Technical Seminar	EEC	2	0	0	2	1
<b>TOTAL</b>				<b>28</b>	<b>18</b>	<b>0</b>	<b>10</b>	<b>23</b>



### SEMESTER VII

Sl.No	COURSE CODE	COURSE TITLE	CATEGORY	CONTACT PERIODS	L	T	P	C
<b>THEORY</b>								
1.	EC8701	Antennas and Microwave Engineering	PC	3	3	0	0	3
2.	EC8751	Optical Communication	PC	3	3	0	0	3
3.	EC8791	Embedded and Real Time Systems	PC	3	3	0	0	3
4.	EC8702	Ad hoc and Wireless Sensor Networks	PC	3	3	0	0	3
5.		Professional Elective -III	PE	3	3	0	0	3
6.		Open Elective - II	OE	3	3	0	0	3
<b>PRACTICALS</b>								
7.	EC8711	Embedded Laboratory	PC	4	0	0	4	2
8.	EC8761	Advanced Communication Laboratory	PC	4	0	0	4	2
<b>TOTAL</b>				<b>26</b>	<b>18</b>	<b>0</b>	<b>8</b>	<b>22</b>

### SEMESTER VIII

Sl. No	COURSE CODE	COURSE TITLE	CATEGORY	CONTACT PERIODS	L	T	P	C
<b>THEORY</b>								
1.		Professional Elective IV	PE	3	3	0	0	3
2.		Professional Elective V	PE	3	3	0	0	3
<b>PRACTICALS</b>								
3.	EC8811	Project Work	EEC	20	0	0	20	10
<b>TOTAL</b>				<b>26</b>	<b>6</b>	<b>0</b>	<b>20</b>	<b>16</b>

**TOTAL NO. OF CREDITS: 185**

## HUMANITIES AND SOCIALSCIENCES (HS)

SI.NO	COURSE CODE	COURSE TITLE	CATEGORY	CONTACT PERIODS	L	T	P	C
1.	HS8151	Communicative English	HS	4	4	0	0	4
2.	HS8251	Technical English	HS	4	4	0	0	4
3.	GE8291	Environmental Science and Engineering	HS	3	3	0	0	3
4.	MG8591	Principles of Management	HS	3	3	0	0	3

## BASIC SCIENCES (BS)

SI.NO	COURSE CODE	COURSE TITLE	CATEGORY	CONTACT PERIODS	L	T	P	C
1.	MA8151	Engineering Mathematics I	BS	4	4	0	0	4
2.	PH8151	Engineering Physics	BS	3	3	0	0	3
3.	CY8151	Engineering Chemistry	BS	3	3	0	0	3
4.	BS8161	Physics and Chemistry Laboratory	BS	4	0	0	4	2
5.	MA8251	Engineering Mathematics II	BS	4	4	0	0	4
6.	PH8253	Physics for Electronics Engineering	BS	3	3	0	0	3
7.	MA8352	Linear Algebra and Partial Differential Equations	BS	4	4	0	0	4
8.	MA8451	Probability and Random Processes	BS	4	4	0	0	4

## ENGINEERING SCIENCES (ES)

SI. NO	COURSE CODE	COURSE TITLE	CATEGORY	CONTACT PERIODS	L	T	P	C
1.	GE8151	Problem Solving and Python Programming	ES	3	3	0	0	3
2.	GE8152	Engineering Graphics	ES	6	2	0	4	4
3.	GE8161	Problem Solving and Python Programming Laboratory	ES	4	0	0	4	2
4.	BE8254	Basic Electrical and Instrumentation Engineering	ES	3	3	0	0	3
5.	GE8261	Engineering Practices Laboratory	ES	4	0	0	4	2
6.	EC8393	Fundamentals of Data Structures In C	ES	3	3	0	0	3
7.	EC8381	Fundamentals of Data Structures in C Laboratory	ES	4	0	0	4	2

**PROFESSIONAL CORE (PC)**

<b>SI.NO</b>	<b>COURSE CODE</b>	<b>COURSE TITLE</b>	<b>CATEGORY</b>	<b>CONTACT PERIODS</b>	<b>L</b>	<b>T</b>	<b>P</b>	<b>C</b>
1.	EC8251	Circuit Analysis	PC	4	4	0	0	4
2.	EC8252	Electronic Devices	PC	3	3	0	0	3
3.	EC8261	Circuits and Devices Lab	PC	4	0	0	4	2
4.	EC8351	Electronic Circuits- I	PC	3	3	0	0	3
5.	EC8352	Signals and Systems	PC	4	4	0	0	4
6.	EC8392	Digital Electronics	PC	3	3	0	0	3
7.	EC8391	Control System Engineering	PC	3	3	0	0	3
8.	EC8361	Analog and Digital Circuits Laboratory	PC	4	0	0	4	2
9.	EC8452	Electronic Circuits II	PC	3	3	0	0	3
10.	EC8491	Communication Theory	PC	3	3	0	0	3
11.	EC8451	Electromagnetic Fields	PC	4	4	0	0	4
12.	EC8453	Linear Integrated Circuits	PC	3	3	0	0	3
13.	EC8461	Circuits Design and Simulation Laboratory	PC	4	0	0	4	2
14.	EC8462	Linear Integrated Circuits Laboratory	PC	4	0	0	4	2
15.	EC8501	Digital Communication	PC	3	3	0	0	3
16.	EC8553	Discrete-Time Signal Processing	PC	4	4	0	0	4
17.	EC8651	Transmission Lines and RF Systems	PC	3	3	0	0	3
18.	EC8552	Computer Architecture and Organization	PC	3	3	0	0	3
19.	EC8551	Communication Networks	PC	3	3	0	0	3
20.	EC8562	Digital Signal Processing Laboratory	PC	4	0	0	4	2
21.	EC8561	Communication Systems Laboratory	PC	4	0	0	4	2
22.	EC8563	Communication Networks Laboratory	PC	4	0	0	4	2

23.	EC8691	Microprocessors and Microcontrollers	PC	3	3	0	0	3
24.	EC8095	VLSI Design	PC	3	3	0	0	3
25.	EC8652	Wireless Communication	PC	3	3	0	0	3
26.	EC8661	VLSI Design	PC	4	0	0	4	2
		Laboratory						
27.	EC8681	Microprocessors and Microcontrollers Laboratory	PC	4	0	0	4	2
28.	EC8701	Antennas and Microwave Engineering	PC	3	3	0	0	3
29.	EC8751	Optical Communication	PC	3	3	0	0	3
30.	EC8791	Embedded and Real Time Systems	PC	3	3	0	0	3
31.	EC8702	Ad hoc and Wireless Sensor Networks	PC	3	3	0	0	3
32.	EC8711	Embedded Laboratory	PC	4	0	0	4	2
33.	EC8761	Advanced Communication Laboratory	PC	4	0	0	4	2

**PROFESSIONAL ELECTIVES (PE)\*  
SEMESTER V  
ELECTIVE I**

Sl. No	COURSE CODE	COURSE TITLE	CATEGORY	CONTACT PERIODS	L	T	P	C
1.	CS8392	Object Oriented Programming	PE	3	3	0	0	3
2.	EC8073	Medical Electronics	PE	3	3	0	0	3
3.	CS8493	Operating Systems	PE	3	3	0	0	3
4.	EC8074	Robotics and Automation	PE	3	3	0	0	3
5.	EC8075	Nano Technology and Applications	PE	3	3	0	0	3
6.	GE8074	Human Rights	PE	3	3	0	0	3
7.	GE8077	Total Quality Management	PE	3	3	0	0	3



**SEMESTER VI  
ELECTIVE II**

SI. No	COURSE CODE	COURSE TITLE	CATEGORY	CONTACT PERIODS	L	T	P	C
1.	CS8792	Cryptography and Network Security	PE	3	3	0	0	3
2.	EC8091	<u>Advanced Digital Signal Processing</u>	PE	3	3	0	0	3
3.	EC8001	MEMS and NEMS	PE	3	3	0	0	3
4.	EC8002	Multimedia Compression and Communication	PE	3	3	0	0	3
5.	EC8003	CMOS Analog IC Design	PE	3	3	0	0	3
6.	EC8004	Wireless Networks	PE	3	3	0	0	3
7.	GE8075	Intellectual Property Rights	PE	3	3	0	0	3

**SEMESTER VII  
ELECTIVE III**

SI. No	COURSE CODE	COURSE TITLE	CATEGORY	CONTACT PERIODS	L	T	P	C
1.	EC8092	Advanced Wireless Communication	PE	3	3	0	0	3
2.	EC8071	Cognitive Radio	PE	3	3	0	0	3
3.	GE8072	Foundation Skills in Integrated Product Development	PE	3	3	0	0	3
4.	CS8082	Machine Learning Techniques	PE	3	3	0	0	3
5.	EC8005	Electronics Packaging and Testing	PE	3	3	0	0	3
6.	EC8006	Mixed Signal IC Design	PE	3	3	0	0	3
7.	GE8071	Disaster Management	PE	3	3	0	0	3

**SEMESTER VIII  
ELECTIVE IV**

Sl.No	COURSE CODE	COURSE TITLE	CATEGORY	CONTACT PERIODS	L	T	P	C
1.	EC8072	Electro Magnetic Interference and Compatibility	PE	3	3	0	0	3
2.	EC8007	Low power SoC Design	PE	3	3	0	0	3
3.	EC8008	Photonic Networks	PE	3	3	0	0	3
4.	EC8009	Compressive Sensing	PE	3	3	0	0	3
5.	EC8093	Digital Image Processing	PE	3	3	0	0	3
6.	GE8076	Professional Ethics in Engineering	PE	3	3	0	0	3

**SEMESTER VIII  
ELECTIVE V**

Sl.No	COURSE CODE	COURSE TITLE	CATEGORY	CONTACT PERIODS	L	T	P	C
1.	EC8010	Video Analytics	PE	3	3	0	0	3
2.	EC8011	DSP Architecture and Programming	PE	3	3	0	0	3
3.	EC8094	Satellite Communication	PE	3	3	0	0	3
4.	CS8086	Soft Computing	PE	3	3	0	0	3
5.	IT8006	Principles of Speech Processing	PE	3	3	0	0	3
6.	GE8073	Fundamentals of Nano Science	PE	3	3	0	0	3

**\*Professional Electives are grouped according to elective number as was done previously.**

**EMPLOYABILITY ENHANCEMENT COURSES (EEC)**

S.NO	COURSE CODE	COURSE TITLE	CATEGORY	CONTACT PERIODS	L	T	P	C
1.	HS8381	Interpersonal Skills/Listening & Speaking	EEC	2	0	0	2	1
2.	EC8611	Technical Seminar	EEC	2	0	0	2	1
3.	EC8811	Project Work	EEC	20	0	0	20	10

**ANNA UNIVERSITY, CHENNAI**  
**AFFILIATED INSTITUTIONS**  
**B.E. MECHANICAL ENGINEERING**  
**REGULATIONS - 2017**  
**CHOICE BASED CREDIT SYSTEM**  
**I TO VIII SEMESTERS CURRICULA AND SYLLABI**

**SEMESTER I**

SL. NO	COURSE CODE	COURSE TITLE	CATEGORY	CONTACT PERIODS	L	T	P	C
<b>THEORY</b>								
1.	HS8151	Communicative English	HS	4	4	0	0	4
2.	MA8151	Engineering Mathematics - I	BS	4	4	0	0	4
3.	PH8151	Engineering Physics	BS	3	3	0	0	3
4.	CY8151	Engineering Chemistry	BS	3	3	0	0	3
5.	GE8151	Problem Solving and Python Programming	ES	3	3	0	0	3
6.	GE8152	Engineering Graphics	ES	6	2	0	4	4
<b>PRACTICALS</b>								
7.	GE8161	Problem Solving and Python Programming Laboratory	ES	4	0	0	4	2
8.	BS8161	Physics and Chemistry Laboratory	BS	4	0	0	4	2
<b>TOTAL</b>				<b>31</b>	<b>19</b>	<b>0</b>	<b>12</b>	<b>25</b>

**SEMESTER II**

SL. NO	COURSE CODE	COURSE TITLE	CATEGORY	CONTACT PERIODS	L	T	P	C
<b>THEORY</b>								
1.	HS8251	Technical English	HS	4	4	0	0	4
2.	MA8251	Engineering Mathematics - II	BS	4	4	0	0	4
3.	PH8251	Materials Science	BS	3	3	0	0	3
4.	BE8253	Basic Electrical, Electronics and Instrumentation Engineering	ES	3	3	0	0	3
5.	GE8291	Environmental Science and Engineering	HS	3	3	0	0	3
6.	GE8292	Engineering Mechanics	ES	5	3	2	0	4
<b>PRACTICALS</b>								
7.	GE8261	Engineering Practices Laboratory	ES	4	0	0	4	2
8.	BE8261	Basic Electrical, Electronics and Instrumentation Engineering Laboratory	ES	4	0	0	4	2
<b>TOTAL</b>				<b>30</b>	<b>20</b>	<b>2</b>	<b>8</b>	<b>25</b>

**SEMESTER III**

SL. NO.	COURSE CODE	COURSE TITLE	CATEGORY	CONTACT PERIODS	L	T	P	C
<b>THEORY</b>								
1.	MA8353	Transforms and Partial Differential Equations	BS	4	4	0	0	4
2.	ME8391	Engineering Thermodynamics	PC	5	3	2	0	4
3.	CE8394	Fluid Mechanics and Machinery	ES	4	4	0	0	4
4.	ME8351	Manufacturing Technology - I	PC	3	3	0	0	3
5.	EE8353	Electrical Drives and Controls	ES	3	3	0	0	3
<b>PRACTICAL</b>								
6.	ME8361	Manufacturing Technology Laboratory - I	PC	4	0	0	4	2
7.	ME8381	Computer Aided Machine Drawing	PC	4	0	0	4	2
8.	EE8361	Electrical Engineering Laboratory	ES	4	0	0	4	2
9.	HS8381	Interpersonal Skills / Listening & Speaking	EEC	2	0	0	2	1
<b>TOTAL</b>				<b>33</b>	<b>17</b>	<b>2</b>	<b>14</b>	<b>25</b>

**SEMESTER IV**

SL. NO.	COURSE CODE	COURSE TITLE	CATEGORY	CONTACT PERIODS	L	T	P	C
<b>THEORY</b>								
1.	MA8452	Statistics and Numerical Methods	BS	4	4	0	0	4
2.	ME8492	Kinematics of Machinery	PC	3	3	0	0	3
3.	ME8451	Manufacturing Technology – II	PC	3	3	0	0	3
4.	ME8491	Engineering Metallurgy	PC	3	3	0	0	3
5.	CE8395	Strength of Materials for Mechanical Engineers	ES	3	3	0	0	3
6.	ME8493	Thermal Engineering- I	PC	3	3	0	0	3
<b>PRACTICAL</b>								
7.	ME8462	Manufacturing Technology Laboratory – II	PC	4	0	0	4	2
8.	CE8381	Strength of Materials and Fluid Mechanics and Machinery Laboratory	ES	4	0	0	4	2
9.	HS8461	Advanced Reading and Writing	EEC	2	0	0	2	1
<b>TOTAL</b>				<b>29</b>	<b>19</b>	<b>0</b>	<b>10</b>	<b>24</b>

### SEMESTER V

SL. NO.	COURSE CODE	COURSE TITLE	CATEGORY	CONTACT PERIODS	L	T	P	C
<b>THEORY</b>								
1.	ME8595	Thermal Engineering- II	PC	3	3	0	0	3
2.	ME8593	Design of Machine Elements	PC	3	3	0	0	3
3.	ME8501	Metrology and Measurements	PC	3	3	0	0	3
4.	ME8594	Dynamics of Machines	PC	4	4	0	0	4
5.		Open Elective I	OE	3	3	0	0	3
<b>PRACTICAL</b>								
6.	ME8511	Kinematics and Dynamics Laboratory	PC	4	0	0	4	2
7.	ME8512	Thermal Engineering Laboratory	PC	4	0	0	4	2
8.	ME8513	Metrology and Measurements Laboratory	PC	4	0	0	4	2
<b>TOTAL</b>				<b>28</b>	<b>16</b>	<b>0</b>	<b>12</b>	<b>22</b>

### SEMESTER VI

SL. NO.	COURSE CODE	COURSE TITLE	CATEGORY	CONTACT PERIODS	L	T	P	C
<b>THEORY</b>								
1.	ME8651	Design of Transmission Systems	PC	3	3	0	0	3
2.	ME8691	Computer Aided Design and Manufacturing	PC	3	3	0	0	3
3.	ME8693	Heat and Mass Transfer	PC	5	3	2	0	4
4.	ME8692	Finite Element Analysis	PC	3	3	0	0	3
5.	ME8694	Hydraulics and Pneumatics	PC	3	3	0	0	3
6.		Professional Elective - I	PE	3	3	0	0	3
<b>PRACTICAL</b>								
7.	ME8681	CAD / CAM Laboratory	PC	4	0	0	4	2
8.	ME8682	Design and Fabrication Project	EEC	4	0	0	4	2
9.	HS8581	Professional Communication	EEC	2	0	0	2	1
<b>TOTAL</b>				<b>30</b>	<b>18</b>	<b>2</b>	<b>10</b>	<b>24</b>



### SEMESTER VII

SL. NO.	COURSE CODE	COURSE TITLE	CATEGORY	CONTACT PERIODS	L	T	P	C
<b>THEORY</b>								
1.	ME8792	Power Plant Engineering	PC	3	3	0	0	3
2.	ME8793	Process Planning and Cost Estimation	PC	3	3	0	0	3
3.	ME8791	Mechatronics	PC	3	3	0	0	3
4.		Open Elective - II	OE	3	3	0	0	3
5.		Professional Elective – II	PE	3	3	0	0	3
6.		Professional Elective – III	PE	3	3	0	0	3
<b>PRACTICAL</b>								
7.	ME8711	Simulation and Analysis Laboratory	PC	4	0	0	4	2
8.	ME8781	Mechatronics Laboratory	PC	4	0	0	4	2
9.	ME8712	Technical Seminar	EEC	2	0	0	2	1
<b>TOTAL</b>				<b>28</b>	<b>18</b>	<b>0</b>	<b>10</b>	<b>23</b>

### SEMESTER VIII

SL. NO.	COURSE CODE	COURSE TITLE	CATEGORY	CONTACT PERIODS	L	T	P	C
<b>THEORY</b>								
1.	MG8591	Principles of Management	HS	3	3	0	0	3
2.		Professional Elective– IV	PE	3	3	0	0	3
<b>PRACTICAL</b>								
3.	ME8811	Project Work	EEC	20	0	0	20	10
<b>TOTAL</b>				<b>29</b>	<b>9</b>	<b>0</b>	<b>20</b>	<b>16</b>

**TOTAL NUMBER OF CREDITS TO BE EARNED FOR AWARD OF THE DEGREE = 184**

### HUMANITIES AND SOCIAL SCIENCES (HS)

SL. NO.	COURSE CODE	COURSE TITLE	CATEGORY	CONTACT PERIODS	L	T	P	C
1.	HS8151	Communicative English	HS	4	4	0	0	4
2.	HS8251	Technical English	HS	4	4	0	0	4
3.	GE8291	Environmental Science and Engineering	HS	3	3	0	0	3
4.	MG8591	Principles of Management	HS	3	3	0	0	3

### BASIC SCIENCE (BS)

SL. NO.	COURSE CODE	COURSE TITLE	CATEGORY	CONTACT PERIODS	L	T	P	C
1.	MA8151	Engineering Mathematics - I	BS	5	3	2	0	4
2.	PH8151	Engineering Physics	BS	3	3	0	0	3
3.	CY8151	Engineering Chemistry	BS	3	3	0	0	3
4.	BS8161	Physics and Chemistry Laboratory	BS	4	0	0	4	2
5.	MA8251	Engineering Mathematics II	BS	4	4	0	0	4
6.	PH8251	Materials Science	BS	3	3	0	0	3
7.	MA8353	Transforms and Partial Differential Equations	BS	4	4	0	0	4
8.	MA8452	Statistics and Numerical Methods	BS	4	4	0	0	4

### ENGINEERING SCIENCES (ES)

SL. NO.	COURSE CODE	COURSE TITLE	CATEGORY	CONTACT PERIODS	L	T	P	C
1.	GE8151	Problem Solving and Python Programming	ES	3	3	0	0	3
2.	GE8152	Engineering Graphics	ES	6	2	0	4	4
3.	GE8161	Problem Solving and Python Programming Laboratory	ES	4	0	0	4	2
4.	BE8253	Basic Electrical, Electronics and Instrumentation Engineering	ES	3	3	0	0	3
5.	GE8292	Engineering Mechanics	ES	5	3	2	0	4
6.	GE8261	Engineering Practices Laboratory	ES	4	0	0	4	2
7.	BE8261	Basic Electrical, Electronics and Instrumentation Engineering Laboratory	ES	4	0	0	4	2
8.	CE8394	Fluid Mechanics and Machinery	ES	5	3	2	0	4
9.	EE8353	Electrical Drives and Controls	ES	3	3	0	0	3
10.	EE8361	Electrical Engineering Laboratory	ES	4	0	0	4	2
11.	CE8395	Strength of Materials for Mechanical Engineers	ES	3	3	0	0	3
12.	CE8381	Strength of Materials and Fluid Mechanics and Machinery Laboratory	ES	4	0	0	4	2

**PROFESSIONAL CORE (PC)**

SL. NO.	COURSE CODE	COURSE TITLE	CATEGORY	CONTACT PERIODS	L	T	P	C
1.	ME8391	Engineering Thermodynamics	PC	5	3	2	0	4
2.	ME8351	Manufacturing Technology - I	PC	3	3	0	0	3
3.	ME8361	Manufacturing Technology Laboratory - I	PC	4	0	0	4	2
4.	ME8381	Computer Aided Machine Drawing	PC	4	0	0	4	2
5.	ME8492	Kinematics of Machinery	PC	3	3	0	0	3
6.	ME8451	Manufacturing Technology- II	PC	3	3	0	0	3
7.	ME8491	Engineering Metallurgy	PC	3	3	0	0	3
8.	ME8493	Thermal Engineering- I	PC	3	3	0	0	3
9.	ME8462	Manufacturing Technology Laboratory-II	PC	4	0	0	4	2
10.	ME8595	Thermal Engineering- II	PC	3	3	0	0	3
11.	ME8593	Design of Machine Elements	PC	3	3	0	0	3
12.	ME8501	Metrology and Measurements	PC	3	3	0	0	3
13.	ME8594	Dynamics of Machines	PC	4	4	0	0	4
14.	ME8511	Kinematics and Dynamics Laboratory	PC	4	0	0	4	2
15.	ME8512	Thermal Engineering Laboratory	PC	4	0	0	4	2
16.	ME8513	Metrology and Measurements Laboratory	PC	4	0	0	4	2
17.	ME8651	Design of Transmission Systems	PC	3	3	0	0	3
18.	ME8691	Computer Aided Design and Manufacturing	PC	3	3	0	0	3
19.	ME8693	Heat and Mass Transfer	PC	5	3	2	0	4
20.	ME8692	Finite Element Analysis	PC	3	3	0	0	3
21.	ME8694	Hydraulics and Pneumatics	PC	3	3	0	0	3
22.	ME8681	C.A.D. / C.A.M. Laboratory	PC	4	0	0	4	2
23.	ME8682	Design and Fabrication Project	PC	4	0	0	4	2
24.	ME8792	Power Plant Engineering	PC	3	3	0	0	3
25.	ME8791	Mechatronics	PC	3	3	0	0	3
26.	ME8793	Process Planning and Cost Estimation	PC	3	3	0	0	3
27.	ME8711	Simulation and Analysis Laboratory	PC	4	0	0	4	2
28.	ME8781	Mechatronics Laboratory	PC	4	0	0	4	2

**PROFESSIONAL ELECTIVES FOR B.E. MECHANICAL ENGINEERING****SEMESTER VI, ELECTIVE I**

SL. NO.	COURSE CODE	COURSE TITLE	CATEGORY	CONTACT PERIODS	L	T	P	C
1.	ME8091	Automobile Engineering	PE	3	3	0	0	3
2.	PR8592	Welding Technology	PE	3	3	0	0	3
3.	ME8096	Gas Dynamics and Jet Propulsion	PE	3	3	0	0	3
4.	GE8075	Intellectual Property Rights	PE	3	3	0	0	3
5.	GE8073	Fundamentals of Nano Science	PE	3	3	0	0	3

**SEMESTER VII, ELECTIVE II**

SL. NO.	COURSE CODE	COURSE TITLE	CATEGORY	CONTACT PERIODS	L	T	P	C
1.	ME8071	Refrigeration and Air conditioning	PE	3	3	0	0	3
2.	ME8072	Renewable Sources of Energy	PE	3	3	0	0	3
3.	ME8098	Quality Control and Reliability Engineering	PE	3	3	0	0	3
4.	ME8073	Unconventional Machining Processes	PE	3	3	0	0	3
5.	MG8491	Operations Research	PE	3	3	0	0	3
6.	MF8071	Additive Manufacturing	PE	3	3	0	0	3
7.	GE8077	Total Quality Management	PE	3	3	0	0	3

**SEMESTER VII, ELECTIVE III**

SL. NO.	COURSE CODE	COURSE TITLE	CATEGORY	CONTACT PERIODS	L	T	P	C
1.	ME8099	Robotics	PE	3	3	0	0	3
2.	ME8095	Design of Jigs, Fixtures and Press Tools	PE	3	3	0	0	3
3.	ME8093	Computational Fluid Dynamics	PE	3	3	0	0	3
4.	ME8097	Non Destructive Testing and Evaluation	PE	3	3	0	0	3
5.	ME8092	Composite Materials and Mechanics	PE	3	3	0	0	3
6.	GE8072	Foundation Skills in Integrated Product Development	PE	3	3	0	0	3
7.	GE8074	Human Rights	PE	3	3	0	0	3
8.	GE8071	Disaster Management	PE	3	3	0	0	3

**ANNA UNIVERSITY, CHENNAI**  
**AFFILIATED INSTITUTIONS**  
**REGULATIONS – 2017**  
**CHOICE BASED CREDIT SYSTEM**  
**MASTER OF BUSINESS ADMINISTRATION (FULL TIME)**  
**CURRICULA AND SYLLABI I TO IV SEMESTERS**  
**SEMESTER - I**

SL. NO.	COURSE CODE	COURSE TITLE	CATEGORY	CONTACT PERIODS	L	T	P	C
<b>THEORY</b>								
1.	BA5101	Economic Analysis for Business	PC	4	4	0	0	4
2.	BA5102	Principles of Management	PC	3	3	0	0	3
3.	BA5103	Accounting for Management	PC	4	4	0	0	4
4.	BA5104	Legal Aspects of Business	PC	3	3	0	0	3
5.	BA5105	Organizational Behaviour	PC	3	3	0	0	3
6.	BA5106	Statistics for Management	PC	3	3	0	0	3
7.	BA5107	Total Quality Management	PC	3	3	0	0	3
<b>PRACTICALS</b>								
8	BA5111	Spoken and Written Communication #	EEC	4	0	0	4	2
<b>TOTAL</b>				<b>27</b>	<b>23</b>	<b>0</b>	<b>4</b>	<b>25</b>

# No end semester examination is required for this course.

**SEMESTER - II**

SL. NO	COURSE CODE	COURSE TITLE	CATEGORY	CONTACT PERIODS	L	T	P	C
<b>THEORY</b>								
1.	BA5201	Applied Operations Research	PC	3	3	0	0	3
2.	BA5202	Business Research Methods	PC	3	3	0	0	3
3.	BA5203	Financial Management	PC	3	3	0	0	3
4.	BA5204	Human Resource Management	PC	3	3	0	0	3
5.	BA5205	Information Management	PC	3	3	0	0	3
6.	BA5206	Operations Management	PC	3	3	0	0	3
7.	BA5207	Marketing Management	PC	4	4	0	0	4
<b>PRACTICALS</b>								
8	BA5211	Data Analysis and Business Modelling	EEC	4	0	0	4	2
<b>TOTAL</b>				<b>26</b>	<b>22</b>	<b>0</b>	<b>4</b>	<b>24</b>



**SEMESTER - III**

SL. NO.	COURSE CODE	COURSE TITLE	CATEGORY	CONTACT PERIODS	L	T	P	C
<b>THEORY</b>								
1.	BA5301	International Business Management	PC	3	3	0	0	3
2	BA5302	Strategic Management	PC	3	3	0	0	3
3		Professional Elective I ***	PE	3	3	0	0	3
4		Professional Elective II***	PE	3	3	0	0	3
5		Professional Elective III***	PE	3	3	0	0	3
6		Professional Elective IV***	PE	3	3	0	0	3
7		Professional Elective V***	PE	3	3	0	0	3
8		Professional Elective VI***	PE	3	3	0	0	3
<b>PRACTICALS</b>								
9	BA5311	Summer Training	EEC	2	0	0	2	1
<b>TOTAL</b>				<b>26</b>	<b>24</b>	<b>0</b>	<b>2</b>	<b>25</b>

\*\*\* Chosen electives should be from two streams of management of three electives each.

**SEMESTER - IV**

SI. NO	COURSE CODE	COURSE TITLE	CATEGORY	CONTACT PERIODS	L	T	P	C
<b>PRACTICALS</b>								
1.	BA5411	Project Work	EEC	24	0	0	24	12
<b>TOTAL</b>				<b>0</b>	<b>0</b>	<b>24</b>	<b>12</b>	

**TOTAL NO. OF CREDITS:86**

**PROFESSIONAL CORE (PC)**

<b>SL. NO.</b>	<b>COURSE CODE</b>	<b>COURSE TITLE</b>	<b>CATEGORY</b>	<b>CONTACT PERIODS</b>	<b>L</b>	<b>T</b>	<b>P</b>	<b>C</b>
1.		Principles of Management	PC	3	3	0	0	3
2.		Accounting for Management	PC	4	4	0	0	4
3.		Economic Analysis for Business	PC	4	4	0	0	4
4.		Legal Aspects of Business	PC	3	3	0	0	3
5.		Organizational Behaviour	PC	3	3	0	0	3
6.		Statistics for Management	PC	3	3	0	0	3
7.		Marketing Management	PC	4	4	0	0	4
8.		Spoken and Written Communication	PC	4	0	0	4	2
9.		Applied Operations Research	PC	3	3	0	0	3
10.		Business Research Methods	PC	3	3	0	0	3
11.		Strategic Management	PC	3	3	0	0	3
12.		Financial Management	PC	3	3	0	0	3
13.		Human Resource Management	PC	3	3	0	0	3
14.		Information Management	PC	3	3	0	0	3
15.		Operations Management	PC	3	3	0	0	3
16.		International Business Management	PC	3	3	0	0	3
17.		Total Quality Management	PC	3	3	0	0	3

**PROFESSIONAL ELECTIVES (PE)****FUNCTIONAL SPECIALIZATIONS**

1. Students can take three electives subjects from two functional specializations  
Or
2. Students can take six elective subjects from any one sectoral specializations

SL. NO	COURSE CODE	COURSE TITLE	CATEGORY	CONTACT PERIODS	L	T	P	C
<b>Stream/ Specialization : Marketing Management</b>								
1.	BA5001	Brand Management	PE	3	3	0	0	3
2.	BA5002	Consumer Behaviour	PE	3	3	0	0	3
3.	BA5003	Customer Relationship Management	PE	3	3	0	0	3
4.	BA5004	Integrated Marketing Communication	PE	3	3	0	0	3
5.	BA5005	Retail Marketing	PE	3	3	0	0	3
6.	BA5006	Services Marketing	PE	3	3	0	0	3
7.	BA5007	Social Marketing	PE	3	3	0	0	3
<b>Stream/ Specialization : Financial Management</b>								
8.	BA5008	Banking Financial Services Management	PE	3	3	0	0	3
9.	BA5009	Corporate Finance	PE	3	3	0	0	3
10.	BA5010	Derivatives Management	PE	3	3	0	0	3
11.	BA5011	Merchant Banking and Financial Services	PE	3	3	0	0	3
12.	BA5012	Security Analysis and Portfolio Management	PE	3	3	0	0	3
13.	BA5013	Strategic Investment and Financing Decisions	PE	3	3	0	0	3
14.	BA5031	International Trade Finance	PE	3	3	0	0	3
<b>Stream/ Specialization : Human Resource Management</b>								
15.	BA5014	Entrepreneurship Development	PE	3	3	0	0	3
16.	BA5015	Industrial Relations and Labour Welfare	PE	3	3	0	0	3
17.	BA5016	Labour Legislations	PE	3	3	0	0	3
18.	BA5017	Managerial	PE	3	3	0	0	3

		Behaviour and Effectiveness						
19.	BA5018	Organizational Theory, Design and Development	PE	3	3	0	0	3
20.	BA5019	Strategic Human Resource Management	PE	3	3	0	0	3
<b>Stream/ Specialization : Systems Management</b>								
21.	BA5020	Advanced Database Management System	PE	3	3	0	0	3
22.	BA5021	Datamining for Business Intelligence	PE	3	3	0	0	3
23.	BA5022	Enterprise Resource Planning	PE	3	3	0	0	3
24.	BA5023	Software Project Management and Quality	PE	3	3	0	0	3
25.	BA5024	E-Business Management	PE	3	3	0	0	3
<b>Stream/ Specialization : Operations Management</b>								
26.	BA5025	Logistics Management	PE	3	3	0	0	3
27.	BA5026	Materials Management	PE	3	3	0	0	3
28.	BA5027	Product Design	PE	3	3	0	0	3
29.	BA5028	Project Management	PE	3	3	0	0	3
30.	BA5029	Services Operations Management	PE	3	3	0	0	3
31.	BA5030	Supply Chain Management	PE	3	3	0	0	3

1. Students can take three electives subjects from two functional specializations
- or
2. Students can take six elective subjects from any one sectoral specializations

SL. NO	COURSE CODE	COURSE TITLE	CATEGORY	CONTACT PERIODS	L	T	P	C
<b>Sectoral Specialization : Logistics and Supply Chain Management</b>								
1.	BA5051	Supply Chain Concepts and Planning	PE	3	3	0	0	3
2.	BA5052	Sourcing and Supply Management	PE	3	3	0	0	3
3.	BA5053	Supply Chain Inventory Management	PE	3	3	0	0	3
4.	BA5054	Supply Chain Information System	PE	3	3	0	0	3
5.	BA5055	Warehouse Management	PE	3	3	0	0	3
6.	BA5056	Transportation and Distribution Management	PE	3	3	0	0	3
7.	BA5057	Reverse and Contract Logistics	PE	3	3	0	0	3
8.	BA5058	Air Cargo Management	PE	3	3	0	0	3
9.	BA5059	Containerization and Allied Business	PE	3	3	0	0	3
10.	BA5060	Exim Management	PE	3	3	0	0	3
11.	BA5061	Fundamentals of Shipping	PE	3	3	0	0	3
12.	BA5062	Port and Terminal Management	PE	3	3	0	0	3
<b>Sectoral Specialization :Infrastructure and Real Estate Management</b>								
13.	BA5063	Infrastructure Planning Scheduling and Control	PE	3	3	0	0	3
14.	BA5064	Contracts and Arbitration	PE	3	3	0	0	3
15.	BA5065	Project Management for Infrastructure	PE	3	3	0	0	3
16.	BA5066	Management of Human Resources, Safety and Quality	PE	3	3	0	0	3
17.	BA5067	Disaster Mitigation and Management	PE	3	3	0	0	3
18.	BA5068	Economics and Financial Management in Construction	PE	3	3	0	0	3
19.	BA5069	Urban Environmental Management	PE	3	3	0	0	3
20.	BA5070	Smart Materials, Techniques and Equipments for Infrastructure	PE	3	3	0	0	3
21.	BA5071	Strategic Airport Infrastructure Management	PE	3	3	0	0	3
22.	BA5072	Real Estate Marketing and Management	PE	3	3	0	0	3
23.	BA5073	Infrastructure and Real Estate Entrepreneurship	PE	3	3	0	0	3
24.	BA5074	Valuation of Real Estate and Infrastructure Assets	PE	3	3	0	0	3

SL. NO.	COURSE CODE	COURSE TITLE	CATEGORY	CONTACT PERIODS	L	T	P	C
1.	BA5111	Spoken and Written Communication #	EEC	4	0	0	4	2
2.	BA5211	Data Analysis and Business Modeling	EEC	4	0	0	4	2
3.	BA5311	Summer Training	EEC	2	0	0	2	1
4.	BA5411	Project Work	EEC	24	0	0	24	12



**ANNA UNIVERSITY, CHENNAI**  
**AFFILIATED INSTITUTIONS**  
**M.E. CONSTRUCTION ENGINEERING AND MANAGEMENT**  
**REGULATIONS – 2017**  
**CHOICE BASED CREDIT SYSTEM**  
**CURRICULA AND SYLLABI**  
**SEMESTER I**

S.No.	COURSE CODE	COURSE TITLE	CATEGORY	CONTACT PERIODS	L	T	P	C
<b>THEORY</b>								
1.	MA5165	<u>Statistical Methods for Engineers</u>	FC	4	4	0	0	4
2.	CN5101	<u>Modern Construction Materials</u>	PC	3	3	0	0	3
3.	CN5102	<u>Construction Equipment</u>	PC	3	3	0	0	3
4.	CN5103	<u>Construction Planning, Scheduling and Control</u>	PC	3	3	0	0	3
5.		Professional Elective I	PE	3	3	0	0	3
6.		Professional Elective II	PE	3	3	0	0	3
<b>TOTAL</b>				<b>19</b>	<b>19</b>	<b>0</b>	<b>0</b>	<b>19</b>

**SEMESTER II**

S.No.	COURSE CODE	COURSE TITLE	CATEGORY	CONTACT PERIODS	L	T	P	C
<b>THEORY</b>								
1.	CN5201	<u>Advanced Construction Techniques</u>	PC	3	3	0	0	3
2.	CN5202	<u>Contract Laws and Regulations</u>	PC	3	3	0	0	3
3.	CN5203	<u>Computer Applications in Construction Engineering and Planning</u>	PC	3	3	0	0	3
4.	CN5204	<u>Economics and Finance Management in Construction</u>	PC	3	3	0	0	3
5.		Professional Elective III	PE	3	3	0	0	3
6.		Professional Elective IV	PE	3	3	0	0	3
<b>PRACTICAL</b>								
7.	CN5211	<u>Advanced Construction Engineering and Computing Techniques Laboratory</u>	PC	4	0	0	4	2
8.	CN5212	Practical Training I (2 Weeks)	EEC	-	-	-	-	1
<b>TOTAL</b>				<b>22</b>	<b>18</b>	<b>0</b>	<b>4</b>	<b>21</b>

**SEMESTER III**

S.No.	COURSE CODE	COURSE TITLE	CATEGORY	CONTACT PERIODS	L	T	P	C
<b>THEORY</b>								
1.	CN5301	Quality Control and Assurance in Construction	PC	3	3	0	0	3
2.		Professional Elective V	PE	3	3	0	0	3
3.		Professional Elective VI	PE	3	3	0	0	3
<b>PRACTICAL</b>								
4.	CN5311	Practical Training II (2 Weeks)	EEC	-	-	-	-	1
5.	CN5312	Seminar	EEC	2	0	0	2	1
6.	CN5313	Project Work (Phase I)	EEC	12	0	0	12	6
<b>TOTAL</b>				<b>23</b>	<b>9</b>	<b>0</b>	<b>14</b>	<b>17</b>

**SEMESTER IV**

S.No.	COURSE CODE	COURSE TITLE	CATEGORY	CONTACT PERIODS	L	T	P	C
<b>PRACTICAL</b>								
1.	CN5411	Practical Training III (2 Weeks)	EEC	-	-	-	-	1
2.	CN5412	Project Work (Phase II)	EEC	24	0	0	24	12
<b>TOTAL</b>				<b>24</b>	<b>0</b>	<b>0</b>	<b>24</b>	<b>13</b>

**TOTAL NO. OF CREDITS: 70**

**FOUNDATION COURSES (FC)**

S.No.	COURSE CODE	COURSE TITLE	CATEGORY	CONTACT PERIODS	L	T	P	C
1.	MA5165	Statistical Methods For Engineers	FC	4	4	0	0	4

**PROFESSIONAL CORE (PC)**

S.No.	COURSE CODE	COURSE TITLE	CATEGORY	CONTACT PERIODS	L	T	P	C
1.	CN5101	Modern Construction Materials	PC	3	3	0	0	3
2.	CN5102	Construction Equipment	PC	3	3	0	0	3
3.	CN5103	Construction Planning, Scheduling and Control	PC	3	3	0	0	3

4.	CN5201	Advanced Construction Techniques	PC	3	3	0	0	3
5.	CN5202	Contract Laws and Regulations	PC	3	3	0	0	3
6.	CN5203	Computer Applications in Construction Engineering and Planning	PC	3	3	0	0	3
7.	CN5204	Economics and Finance Management in Construction	PC	3	3	0	0	3
8.	CN5301	Quality Control and Assurance in Construction	PC	3	3	0	0	3
9.	CN5211	Advanced Construction Engineering and Computing Techniques Laboratory	PC	4	0	0	4	2

### PROFESSIONAL ELECTIVES

#### SEMESTER I ELECTIVE I & II

S.No.	COURSE CODE	COURSE TITLE	CATEGORY	CONTACT PERIODS	L	T	P	C
1.	CN5001	<u>Advanced Concrete Technology</u>	PE	3	3	0	0	3
2.	CN5002	<u>Shoring, Scaffolding and Formwork</u>	PE	3	3	0	0	3
3.	CN5003	<u>Quantitative Techniques in Management</u>	PE	3	3	0	0	3
4.	CN5004	<u>System Integration in Construction</u>	PE	3	3	0	0	3

#### SEMESTER II ELECTIVE III & IV

S.No.	COURSE CODE	COURSE TITLE	CATEGORY	CONTACT PERIODS	L	T	P	C
1.	CN5005	<u>Design of Energy Efficient Buildings</u>	PE	3	3	0	0	3
2.	CN5006	<u>Construction Project Management</u>	PE	3	3	0	0	3
3.	CN5007	<u>Construction Personnel Management</u>	PE	3	3	0	0	3
4.	CN5008	<u>Stress Management</u>	PE	3	3	0	0	3

**SEMESTER III**  
**ELECTIVE V & VI**

S.No.	COURSE CODE	COURSE TITLE	CATEGORY	CONTACT PERIODS	L	T	P	C
1.	CN5009	<u>Project Formulation and Appraisal</u>	PE	3	3	0	0	3
2.	CN5010	<u>Resource Management and Control in Construction</u>	PE	3	3	0	0	3
3.	CN5011	<u>Project Safety Management</u>	PE	3	3	0	0	3
4.	CN5012	<u>Management Information Systems</u>	PE	3	3	0	0	3

**EMPLOYABILITY ENHANCEMENT COURSES (EEC)**

S.No.	COURSE CODE	COURSE TITLE	CATEGORY	CONTACT PERIODS	L	T	P	C
1.	CN5212	Practical Training I (2 Weeks)	EEC	-	-	-	-	1
2.	CN5311	Practical Training II (2 Weeks)	EEC	-	-	-	-	1
3.	CN5411	Practical Training III (2 Weeks)	EEC	-	-	-	-	1
4.	CN5312	Seminar	EEC	2	0	0	2	1
5.	CN5313	Project Work (Phase I)	EEC	12	0	0	12	6
6.	CN5412	Project Work (Phase II)	EEC	24	0	0	24	12

**ANNA UNIVERSITY, CHENNAI**  
**AFFILIATED INSTITUTIONS**  
**M.E. ENGINEERING DESIGN**  
**REGULATIONS 2017**  
**CHOICE BASED CREDIT SYSTEM**  
**I TO IV SEMESTERS (FULL TIME) CURRICULUM AND SYLLABUS**

**SEMESTER I**

SL. NO.	COURSE CODE	COURSE TITLE	CATEGORY	CONTACT PERIODS	L	T	P	C
<b>THEORY</b>								
1.	MA5156	Applied Mathematics for Engineers	FC	4	4	0	0	4
2.	ED5191	Engineering Fracture Mechanics	PC	3	3	0	0	3
3.	ED5151	Computer Applications in Design	PC	3	3	0	0	3
4.	ED5152	Quality Concepts in Design	PC	3	3	0	0	3
5.	ED5153	Advanced Finite Element Analysis	PC	3	3	0	0	3
6.		Professional Elective I	PE	3	3	0	0	3
<b>PRACTICAL</b>								
7.	ED5161	CAD Laboratory	PC	4	0	0	4	2
8.	ED5162	Advanced Analysis and Simulation Laboratory	PC	4	0	0	4	2
<b>TOTAL</b>				<b>27</b>	<b>19</b>	<b>0</b>	<b>8</b>	<b>23</b>

**SEMESTER II**

SL. NO.	COURSE CODE	COURSE TITLE	CATEGORY	CONTACT PERIODS	L	T	P	C
<b>THEORY</b>								
1.	ED5251	Mechanisms Design and Simulation	PC	3	3	0	0	3
2.	ED5252	Mechanical Behavior of Materials	PC	3	3	0	0	3
3.	ED5253	Integrated Mechanical Design	PC	3	3	0	0	3
4.	ED5254	Vibration Analysis and Control	PC	3	3	0	0	3
5.		Professional Elective II	PE	3	3	0	0	3
6.		Professional Elective III	PE	3	3	0	0	3
<b>PRACTICAL</b>								
7.	ED5261	Vibration Laboratory	PC	2	0	0	2	1
8.	ED5211	Design Project	EEC	4	0	0	4	2
<b>TOTAL</b>				<b>24</b>	<b>18</b>	<b>0</b>	<b>6</b>	<b>21</b>

**SEMESTER III**

SL. NO.	COURSE CODE	COURSE TITLE	CATEGORY	CONTACT PERIODS	L	T	P	C
<b>THEORY</b>								
1.	PD5091	Product Lifecycle Management	PC	3	3	0	0	3
2.		Elective IV	PE	3	3	0	0	3
3.		Elective V	PE	3	3	0	0	3
<b>PRACTICAL</b>								
4.	ED5311	Project Work Phase I	EEC	12	0	0	12	6
<b>TOTAL</b>				<b>21</b>	<b>9</b>	<b>0</b>	<b>12</b>	<b>15</b>

**SEMESTER IV**

<b>SL. NO</b>	<b>COURSE CODE</b>	<b>COURSE TITLE</b>	<b>CATEGORY</b>	<b>CONTACT PERIODS</b>	<b>L</b>	<b>T</b>	<b>P</b>	<b>C</b>
<b>PRACTICAL</b>								
1.	ED5411	Project Work Phase II	EEC	24	0	0	24	12
<b>TOTAL</b>				<b>24</b>	<b>0</b>	<b>0</b>	<b>24</b>	<b>12</b>

**TOTAL CREDITS TO BE EARNED FOR THE AWARD OF THE DEGREE = 71**



**FOUNDATION COURSES (FC)**

<b>SL. NO.</b>	<b>COURSE CODE</b>	<b>COURSE TITLE</b>	<b>CATEGORY</b>	<b>CONTACT PERIODS</b>	<b>L</b>	<b>T</b>	<b>P</b>	<b>C</b>
1.	MA5156	Applied Mathematics for Engineers	FC	4	4	0	0	4

**PROFESSIONAL CORE (PC)**

<b>SL. NO.</b>	<b>COURSE CODE</b>	<b>COURSE TITLE</b>	<b>CATEGORY</b>	<b>CONTACT PERIODS</b>	<b>L</b>	<b>T</b>	<b>P</b>	<b>C</b>
1.	ED5191	Engineering Fracture Mechanics	PC	3	3	0	0	3
2.	ED5151	Computer Applications in Design	PC	3	3	0	0	3
3.	ED5152	Quality Concepts in Design	PC	3	3	0	0	3
4.	ED5153	Advanced Finite Element Analysis	PC	3	3	0	0	3
5.	ED5161	CAD Laboratory	PC	4	0	0	4	2
6.	ED5162	Advanced Analysis and Simulation Laboratory	PC	4	0	0	4	2
7.	ED5251	Mechanisms Design and Simulation	PC	3	3	0	0	3
8.	ED5252	Mechanical Behavior of Materials	PC	3	3	0	0	3
9.	ED5253	Integrated Mechanical Design	PC	4	3	0	0	3
10.	ED5254	Vibration Analysis and Control	PC	3	3	0	0	3
11.	ED5261	Vibration Laboratory	PC	2	0	0	2	1
12.	PD5091	Product Lifecycle Management	PC	3	3	0	0	3

**LIST OF ELECTIVES FOR M.E. ENGINEERING DESIGN****SEMESTER I (Elective I)**

SL. NO	COURSE CODE	COURSE TITLE	CATEGORY	CONTACT PERIODS	L	T	P	C
1.	ED5071	Optimization Techniques in Design	PE	3	3	0	0	3
2.	ED5072	Design of Pressure Vessel and Piping	PE	3	3	0	0	3
3.	ED5091	Design of Material Handling Equipments	PE	3	3	0	0	3
4.	CC5292	Additive Manufacturing and Tooling	PE	3	3	0	0	3
5.	ED5073	Information Analytics	PE	3	3	0	0	3

**SEMESTER II (Elective II & III)**

SL. NO	COURSE CODE	COURSE TITLE	CATEGORY	CONTACT PERIODS	L	T	P	C
1.	ED5001	Plates and Shells	PE	3	3	0	0	3
2.	ED5002	Modal Analysis of Mechanical Systems	PE	3	3	0	0	3
3.	ED5003	Advanced Metal Forming Techniques	PE	3	3	0	0	3
4.	ED5074	Tribology in Design	PE	3	3	0	0	3
5.	ED5004	Surface Engineering	PE	3	3	0	0	3
6.	ED5092	Advanced Mechanics of Materials	PE	3	3	0	0	3

**SEMESTER III (Elective IV & V)**

SL. NO	COURSE CODE	COURSE TITLE	CATEGORY	CONTACT PERIODS	L	T	P	C
1.	ED5075	Design for Internet of Things	PE	3	3	0	0	3
2.	ED5005	Design of Hydraulic and Pneumatic Systems	PE	3	3	0	0	3
3.	ED5006	Bearing Design and Rotor Dynamics	PE	3	3	0	0	3
4.	ED5076	Product Design for Sustainability	PE	3	3	0	0	3
5.	ED5093	Computational Fluid Dynamics	PE	3	3	0	0	3
6.	CC5291	Design for Manufacture, Assembly and Environments	PE	3	3	0	0	3
7.	ED5077	Biomechanics	PE	3	3	0	0	3
8.	ED5078	Composite Materials and Mechanics	PE	3	3	0	0	3

**EMPLOYABILITY ENHANCEMENT COURSES (EEC)**

<b>SL. NO.</b>	<b>COURSE CODE</b>	<b>COURSE TITLE</b>	<b>CATEGORY</b>	<b>CONTACT PERIODS</b>	<b>L</b>	<b>T</b>	<b>P</b>	<b>C</b>
1.	ED5211	Design Project	EEC	4	0	0	4	2
2.	ED5311	Project Work Phase I	EEC	12	0	0	12	6
3.	ED5411	Project Work Phase II	EEC	24	0	0	24	12

**ANNA UNIVERSITY, CHENNAI**

**AFFILIATED INSTITUTIONS**

**R - 2013**

**B. E. CIVIL ENGINEERING**

**I TO VIII SEMESTERS CURRICULUM & SYLLABUS**

**SEMESTER I**

SL. No.	COURSE CODE	COURSE TITLE	L	T	P	C
<b>THEORY</b>						
1.	HS6151	Technical English - I	3	1	0	4
2.	MA6151	Mathematics – I	3	1	0	4
3.	PH6151	Engineering Physics – I	3	0	0	3
4.	CY6151	Engineering Chemistry – I	3	0	0	3
5.	GE6151	Computer Programming	3	0	0	3
6.	GE6152	Engineering Graphics	2	0	3	4
<b>PRACTICAL</b>						
7.	GE6161	Computer Practices Laboratory	0	0	3	2
8.	GE6162	Engineering Practices Laboratory	0	0	3	2
9.	GE6163	Physics and Chemistry Laboratory - I	0	0	2	1
<b>TOTAL</b>			<b>17</b>	<b>2</b>	<b>11</b>	<b>26</b>

**SEMESTER II**

SL. No.	COURSE CODE	COURSE TITLE	L	T	P	C
<b>THEORY</b>						
1.	HS6251	Technical English - II	3	1	0	4
2.	MA6251	Mathematics – II	3	1	0	4
3.	PH6251	Engineering Physics – II	3	0	0	3
4.	CY6251	Engineering Chemistry – II	3	0	0	3
5.	GE6252	Basic Electrical and Electronics Engineering	4	0	0	4
6.	GE6253	Engineering Mechanics	3	1	0	4
<b>PRACTICAL</b>						
7.	GE6261	Computer Aided Drafting and Modeling Laboratory	0	1	2	2
8.	GE6262	Physics and Chemistry Laboratory - II	0	0	2	1
<b>TOTAL</b>			<b>19</b>	<b>4</b>	<b>4</b>	<b>25</b>

**SEMESTER III**

SL. No.	COURSE CODE	COURSE TITLE	L	T	P	C
<b>THEORY</b>						
1.	MA6351	Transforms and Partial Differential Equations	3	1	0	4
2.	GE6351	Environmental Science and Engineering	3	0	0	3
3.	CE6301	Engineering Geology	3	0	0	3
4.	CE6302	Mechanics of Solids	3	1	0	4
5.	CE6303	Mechanics of Fluids	3	0	0	3
6.	CE6304	Surveying I	3	0	0	3
<b>PRACTICAL</b>						
7.	CE6311	Survey Practical I	0	0	4	2
8.	CE6312	Computer Aided Building Drawing	0	0	4	2
<b>TOTAL</b>			<b>18</b>	<b>2</b>	<b>8</b>	<b>24</b>

**SEMESTER IV**

SL. No.	COURSE CODE	COURSE TITLE	L	T	P	C
<b>THEORY</b>						
1.	MA6459	Numerical Methods	3	1	0	4
2.	CE6401	Construction Materials	3	0	0	3
3.	CE6402	Strength of Materials	3	1	0	4
4.	CE6403	Applied Hydraulic Engineering	3	1	0	4
5.	CE6404	Surveying II	3	0	0	3
6.	CE6405	Soil Mechanics	3	0	0	3
<b>PRACTICAL</b>						
7.	CE6411	Strength of Materials Laboratory	0	0	3	2
8.	CE6412	Hydraulic Engineering Laboratory	0	0	3	2
9.	CE6413	Survey Practical II	0	0	4	2
<b>TOTAL</b>			<b>18</b>	<b>3</b>	<b>10</b>	<b>27</b>

**SEMESTER V**

SL. No.	COURSE CODE	COURSE TITLE	L	T	P	C
<b>THEORY</b>						
1.	CE6501	Structural Analysis I	3	1	0	4
2.	CE6502	Foundation Engineering	3	0	0	3
3.	CE6503	Environmental Engineering I	3	0	0	3
4.	CE6504	Highway Engineering	3	0	0	3
5.	CE6505	Design of Reinforced Concrete Elements	3	0	0	3
6.	CE6506	Construction Techniques, Equipment and Practice	3	0	0	3
<b>PRACTICAL</b>						
7.	GE6674	Communication and Soft skills- Laboratory Based	0	0	4	2
8.	CE6511	Soil Mechanics Laboratory	0	0	4	2
9.	CE6512	Survey Camp*	-	-	-	1
<b>TOTAL</b>			<b>18</b>	<b>1</b>	<b>8</b>	<b>24</b>

\* Survey Camp to be conducted for a period of 2 weeks during 4<sup>th</sup> Semester Summer Vacation

**SEMESTER VI**

SL. No.	COURSE CODE	COURSE TITLE	L	T	P	C
<b>THEORY</b>						
1.	CE6601	Design of Reinforced Concrete & Brick Masonry Structures	3	0	0	3
2.	CE6602	Structural Analysis II	3	1	0	4
3.	CE6603	Design of Steel Structures	3	1	0	4
4.	CE6604	Railways, Airports and Harbour Engineering	3	0	0	3
5.	CE6605	Environmental Engineering II	3	0	0	3
6.		Elective I	3	0	0	3
<b>PRACTICAL</b>						
7.	CE6611	Environmental Engineering Laboratory	0	0	3	2
8.	CE6612	Concrete and Highway Engineering Laboratory	0	0	3	2
<b>TOTAL</b>			<b>18</b>	<b>2</b>	<b>6</b>	<b>24</b>

### SEMESTER VII

SL. No.	COURSE CODE	COURSE TITLE	L	T	P	C
<b>THEORY</b>						
1.	CE6701	Structural Dynamics and Earthquake Engineering	3	0	0	3
2.	CE6702	Prestressed Concrete Structures	3	0	0	3
3.	CE6703	Water Resources and Irrigation Engineering	3	0	0	3
4.	CE6704	Estimation and Quantity Surveying	3	0	0	3
5.		Elective II	3	0	0	3
6.		Elective III	3	0	0	3
<b>PRACTICAL</b>						
7.	CE6711	Computer Aided Design and Drafting Laboratory	0	0	4	2
8.	CE6712	Design Project	0	0	4	2
<b>TOTAL</b>			<b>18</b>	<b>0</b>	<b>8</b>	<b>22</b>

### SEMESTER VIII

SL. No.	COURSE CODE	COURSE TITLE	L	T	P	C
<b>THEORY</b>						
1.	MG6851	Principles of Management	3	0	0	3
2.		Elective IV	3	0	0	3
3.		Elective V	3	0	0	3
<b>PRACTICAL</b>						
4.	CE6811	<u>Project Work</u>	0	0	12	6
<b>TOTAL</b>			<b>9</b>	<b>0</b>	<b>12</b>	<b>15</b>

**TOTAL NO OF CREDITS: 187**

### LIST OF ELECTIVES

#### ELECTIVE I

SL. No.	COURSE CODE	COURSE TITLE	L	T	P	C
1.	CE6001	Hydrology	3	0	0	3
2.	CE6002	Concrete Technology	3	0	0	3
3.	CE6003	Remote Sensing Techniques and GIS	3	0	0	3
4.	CE6004	Architecture	3	0	0	3
5.	GE6075	Professional Ethics in Engineering	3	0	0	3
6.	CE6005	Construction Planning and Scheduling	3	0	0	3

#### ELECTIVE II

SL. No.	COURSE CODE	COURSE TITLE	L	T	P	C
7.	CE6006	Traffic Engineering and Management	3	0	0	3
8.	CE6007	Housing Planning and Management	3	0	0	3
9.	CE6008	Groundwater Engineering	3	0	0	3
10.	CE6009	Water Resources Systems Analysis	3	0	0	3
11.	CE6010	Pavement Engineering	3	0	0	3

**ELECTIVE III**

<b>SL. No.</b>	<b>COURSE CODE</b>	<b>COURSE TITLE</b>	<b>L</b>	<b>T</b>	<b>P</b>	<b>C</b>
12.	EN6801	Environmental Impact Assessment	3	0	0	3
13.	CE6023	Industrial Waste Management	3	0	0	3
14.	CE6011	Air Pollution Management	3	0	0	3
15.	EN6501	Municipal Solid Waste Management	3	0	0	3
16.	CE6012	Ground Improvement Techniques	3	0	0	3
17.	GE6083	Disaster Management	3	0	0	3

**ELECTIVE IV**

<b>SL. No.</b>	<b>COURSE CODE</b>	<b>COURSE TITLE</b>	<b>L</b>	<b>T</b>	<b>P</b>	<b>C</b>
18.	CE6013	Bridge Structures	3	0	0	3
19.	CE6014	Storage Structures	3	0	0	3
20.	CE6015	Tall Buildings	3	0	0	3
21.	CE6016	Prefabricated Structures	3	0	0	3
22.	CE6017	Experimental Analysis of Stress	3	0	0	3
23.	GE6757	Total Quality Management	3	0	0	3
24.	GE6084	Human Rights	3	0	0	3

**ELECTIVE V**

<b>SL. No.</b>	<b>COURSE CODE</b>	<b>COURSE TITLE</b>	<b>L</b>	<b>T</b>	<b>P</b>	<b>C</b>
25.	CE6018	Computer Aided Design of Structures	3	0	0	3
26.	CE6019	Industrial Structures	3	0	0	3
27.	CE6020	Finite Element Techniques	3	0	0	3
28.	CE6021	Repair and Rehabilitation of Structures	3	0	0	3
29.	CE6022	Earthquake Geotechnical Engineering	3	0	0	3



**ANNA UNIVERSITY, CHENNAI**  
**AFFILIATED INSTITUTIONS**  
**R-2013**  
**B.E. COMPUTER SCIENCE AND ENGINEERING**  
**I TO VIII SEMESTER CURRICULUM AND SYLLABUS**

**SEMESTER I**

SL. No.	COURSE CODE	COURSE TITLE	L	T	P	C
<b>THEORY</b>						
1.	HS6151	<u>Technical English – I</u>	3	1	0	4
2.	MA6151	<u>Mathematics – I</u>	3	1	0	4
3.	PH6151	<u>Engineering Physics – I</u>	3	0	0	3
4.	CY6151	<u>Engineering Chemistry – I</u>	3	0	0	3
5.	GE6151	<u>Computer Programming</u>	3	0	0	3
6.	GE6152	<u>Engineering Graphics</u>	2	0	3	4
<b>PRACTICALS</b>						
7.	GE6161	<u>Computer Practices Laboratory</u>	0	0	3	2
8.	GE6162	<u>Engineering Practices Laboratory</u>	0	0	3	2
9.	GE6163	<u>Physics and Chemistry Laboratory - I</u>	0	0	2	1
<b>TOTAL</b>			<b>17</b>	<b>2</b>	<b>11</b>	<b>26</b>

**SEMESTER II**

SL. No.	COURSE CODE	COURSE TITLE	L	T	P	C
<b>THEORY</b>						
1.	HS6251	<u>Technical English – II</u>	3	1	0	4
2.	MA6251	<u>Mathematics – II</u>	3	1	0	4
3.	PH6251	<u>Engineering Physics – II</u>	3	0	0	3
4.	CY6251	<u>Engineering Chemistry – II</u>	3	0	0	3
5.	CS6201	<u>Digital Principles and System Design</u>	3	0	0	3
6.	CS6202	<u>Programming and Data Structures I</u>	3	0	0	3
<b>PRACTICALS</b>						
7.	GE6262	<u>Physics and Chemistry Laboratory - II</u>	0	0	2	1
8.	CS6211	<u>Digital Laboratory</u>	0	0	3	2
9.	CS6212	<u>Programming and Data Structures Laboratory I</u>	0	0	3	2
<b>TOTAL</b>			<b>18</b>	<b>2</b>	<b>8</b>	<b>25</b>

### SEMESTER III

SL. No.	COURSE CODE	COURSE TITLE	L	T	P	C
<b>THEORY</b>						
1.	MA6351	<u>Transforms and Partial Differential Equations</u>	3	1	0	4
2.	CS6301	<u>Programming and Data Structure II</u>	3	0	0	3
3.	CS6302	<u>Database Management Systems</u>	3	0	0	3
4.	CS6303	<u>Computer Architecture</u>	3	0	0	3
5.	CS6304	<u>Analog and Digital Communication</u>	3	0	0	3
6.	GE6351	<u>Environmental Science and Engineering</u>	3	0	0	3
<b>PRACTICAL</b>						
7.	CS6311	<u>Programming and Data Structure Laboratory II</u>	0	0	3	2
8.	CS6312	<u>Database Management Systems Laboratory</u>	0	0	3	2
<b>TOTAL</b>			<b>18</b>	<b>1</b>	<b>6</b>	<b>23</b>

### SEMESTER IV

SL. No.	COURSE CODE	COURSE TITLE	L	T	P	C
<b>THEORY</b>						
1.	MA6453	<u>Probability and Queueing Theory</u>	3	1	0	4
2.	CS6551	<u>Computer Networks</u>	3	0	0	3
3.	CS6401	<u>Operating Systems</u>	3	0	0	3
4.	CS6402	<u>Design and Analysis of Algorithms</u>	3	0	0	3
5.	EC6504	<u>Microprocessor and Microcontroller</u>	3	0	0	3
6.	CS6403	<u>Software Engineering</u>	3	0	0	3
<b>PRACTICAL</b>						
7.	CS6411	<u>Networks Laboratory</u>	0	0	3	2
8.	CS6412	<u>Microprocessor and Microcontroller Laboratory</u>	0	0	3	2
9.	CS6413	<u>Operating Systems Laboratory</u>	0	0	3	2
<b>TOTAL</b>			<b>18</b>	<b>1</b>	<b>9</b>	<b>25</b>

### SEMESTER V

SL. No.	COURSE CODE	COURSE TITLE	L	T	P	C
<b>THEORY</b>						
1.	MA6566	<u>Discrete Mathematics</u>	3	1	0	4
2.	CS6501	<u>Internet Programming</u>	3	1	0	4
3.	CS6502	<u>Object Oriented Analysis and Design</u>	3	0	0	3
4.	CS6503	<u>Theory of Computation</u>	3	0	0	3
5.	CS6504	<u>Computer Graphics</u>	3	0	0	3
<b>PRACTICAL</b>						
6.	CS6511	<u>Case Tools Laboratory</u>	0	0	3	2
7.	CS6512	<u>Internet Programming Laboratory</u>	0	0	3	2
8.	CS6513	<u>Computer Graphics Laboratory</u>	0	0	3	2
<b>TOTAL</b>			<b>15</b>	<b>2</b>	<b>9</b>	<b>23</b>

### SEMESTER VI

SL. No.	COURSE CODE	COURSE TITLE	L	T	P	C
<b>THEORY</b>						
1.	CS6601	<u>Distributed Systems</u>	3	0	0	3
2.	IT6601	<u>Mobile Computing</u>	3	0	0	3
3.	CS6660	<u>Compiler Design</u>	3	0	0	3
4.	IT6502	<u>Digital Signal Processing</u>	3	1	0	4
5.	CS6659	<u>Artificial Intelligence</u>	3	0	0	3
6.		Elective I	3	0	0	3
<b>PRACTICAL</b>						
7.	CS6611	<u>Mobile Application Development Laboratory</u>	0	0	3	2
8.	CS6612	<u>Compiler Laboratory</u>	0	0	3	2
9.	GE6674	<u>Communication and Soft Skills - Laboratory Based</u>	0	0	4	2
<b>TOTAL</b>			<b>18</b>	<b>1</b>	<b>10</b>	<b>25</b>

### SEMESTER VII

SL. No.	COURSE CODE	COURSE TITLE	L	T	P	C
<b>THEORY</b>						
1.	CS6701	<u>Cryptography and Network Security</u>	3	0	0	3
2.	CS6702	<u>Graph Theory and Applications</u>	3	0	0	3
3.	CS6703	<u>Grid and Cloud Computing</u>	3	0	0	3
4.	CS6704	<u>Resource Management Techniques</u>	3	0	0	3
5.		Elective II	3	0	0	3
6.		Elective III	3	0	0	3
<b>PRACTICAL</b>						
7.	CS6711	<u>Security Laboratory</u>	0	0	3	2
8.	CS6712	<u>Grid and Cloud Computing Laboratory</u>	0	0	3	2
<b>TOTAL</b>			<b>18</b>	<b>0</b>	<b>6</b>	<b>22</b>

### SEMESTER VIII

SL. No.	COURSE CODE	COURSE TITLE	L	T	P	C
<b>THEORY</b>						
1.	CS6801	<u>Multi – Core Architectures and Programming</u>	3	0	0	3
2.		Elective IV	3	0	0	3
3.		Elective V	3	0	0	3
<b>PRACTICAL</b>						
4.	CS6811	<u>Project Work</u>	0	0	12	6
<b>TOTAL</b>			<b>9</b>	<b>0</b>	<b>12</b>	<b>15</b>

**TOTAL NO. OF CREDITS: 184**

### LIST OF ELECTIVES

#### SEMESTER VI – Elective I

S.NO.	CODE NO.	COURSE TITLE	L	T	P	C
1.	CS6001	<u>C# and .Net programming</u>	3	0	0	3
2.	GE6757	<u>Total Quality Management</u>	3	0	0	3
3.	IT6702	<u>Data Warehousing and Data Mining</u>	3	0	0	3
4.	CS6002	<u>Network Analysis and Management</u>	3	0	0	3
5.	IT6004	<u>Software Testing</u>	3	0	0	3
6.	GE6084	Human Rights	3	0	0	3

**SEMESTER VII – Elective II**

S.NO.	CODE NO.	COURSE TITLE	L	T	P	C
7.	CS6003	<u>Ad hoc and Sensor Networks</u>	3	0	0	3
8.	CS6004	<u>Cyber Forensics</u>	3	0	0	3
9.	CS6005	<u>Advanced Database Systems</u>	3	0	0	3
10.	BM6005	<u>Bio Informatics</u>	3	0	0	3
11.	IT6801	<u>Service Oriented Architecture</u>	3	0	0	3

**SEMESTER VII – Elective III**

S.NO	CODE NO.	COURSE TITLE	L	T	P	C
12.	IT6005	<u>Digital Image Processing</u>	3	0	0	3
13.	EC6703	<u>Embedded and Real Time Systems</u>	3	0	0	3
14.	CS6006	<u>Game Programming</u>	3	0	0	3
15.	CS6007	<u>Information Retrieval</u>	3	0	0	3
16.	IT6006	<u>Data Analytics</u>	3	0	0	3

**SEMESTER VIII – Elective IV**

S.NO.	CODE NO.	COURSE TITLE	L	T	P	C
17.	CS6008	<u>Human Computer Interaction</u>	3	0	0	3
18.	CS6009	<u>Nano Computing</u>	3	0	0	3
19.	IT6011	<u>Knowledge Management</u>	3	0	0	3
20.	CS6010	<u>Social Network Analysis</u>	3	0	0	3
21.	CS6013	Foundation Skills in Integrated Product Development	3	0	0	3

**SEMESTER VIII – Elective V**

S.NO.	CODE NO.	COURSE TITLE	L	T	P	C
22.	MG6088	<u>Software Project Management</u>	3	0	0	3
23.	GE6075	<u>Professional Ethics in Engineering</u>	3	0	0	3
24.	CS6011	<u>Natural Language Processing</u>	3	0	0	3
25.	CS6012	<u>Soft Computing</u>	3	0	0	3
26.	GE6083	Disaster Management	3	0	0	3

**ANNA UNIVERSITY, CHENNAI**  
**AFFILIATED INSTITUTIONS**  
**R-2013**

**B.E. ELECTRONICS AND COMMUNICATION ENGINEERING**  
**I – VIII SEMESTERS CURRICULUM AND SYLLABUS**

**SEMESTER I**

SL. No.	COURSE CODE	COURSE TITLE	L	T	P	C
<b>THEORY</b>						
1.	HS6151	<u>Technical English – I</u>	3	1	0	4
2.	MA6151	<u>Mathematics – I</u>	3	1	0	4
3.	PH6151	<u>Engineering Physics – I</u>	3	0	0	3
4.	CY6151	<u>Engineering Chemistry – I</u>	3	0	0	3
5.	GE6151	<u>Computer Programming</u>	3	0	0	3
6.	GE6152	<u>Engineering Graphics</u>	2	0	3	4
<b>PRACTICALS</b>						
7.	GE6161	<u>Computer Practices Laboratory</u>	0	0	3	2
8.	GE6162	<u>Engineering Practices Laboratory</u>	0	0	3	2
9.	GE6163	<u>Physics and Chemistry Laboratory - I</u>	0	0	2	1
<b>TOTAL</b>			<b>17</b>	<b>2</b>	<b>11</b>	<b>26</b>

**SEMESTER II**

SL. No.	COURSE CODE	COURSE TITLE	L	T	P	C
<b>THEORY</b>						
1.	HS6251	<u>Technical English – II</u>	3	1	0	4
2.	MA6251	<u>Mathematics – II</u>	3	1	0	4
3.	PH6251	<u>Engineering Physics – II</u>	3	0	0	3
4.	CY6251	<u>Engineering Chemistry – II</u>	3	0	0	3
5.	EC6201	<u>Electronic Devices</u>	3	0	0	3
6.	EE6201	<u>Circuit Theory</u>	3	1	0	4
<b>PRACTICALS</b>						
7.	GE6262	<u>Physics and Chemistry Laboratory - II</u>	0	0	2	1
8.	EC6211	<u>Circuits and Devices Laboratory</u>	0	0	3	2
<b>TOTAL</b>			<b>18</b>	<b>3</b>	<b>5</b>	<b>24</b>

### SEMESTER III

SL. No.	COURSE CODE	COURSE TITLE	L	T	P	C
<b>THEORY</b>						
1.	MA6351	<u>Transforms and Partial Differential Equations</u>	3	1	0	4
2.	EE6352	<u>Electrical Engineering and Instrumentation</u>	3	1	0	4
3.	EC6301	<u>Object Oriented Programming and Data Structures</u>	3	0	0	3
4.	EC6302	<u>Digital Electronics</u>	3	0	0	3
5.	EC6303	<u>Signals and Systems</u>	3	1	0	4
6.	EC6304	<u>Electronic Circuits- I</u>	3	1	0	4
<b>PRACTICAL</b>						
7.	EC6311	<u>Analog and Digital Circuits Laboratory</u>	0	0	3	2
8.	EC6312	<u>OOPS and Data Structures Laboratory</u>	0	0	3	2
<b>TOTAL</b>			<b>18</b>	<b>4</b>	<b>6</b>	<b>26</b>

### SEMESTER IV

SL. No.	COURSE CODE	COURSE TITLE	L	T	P	C
<b>THEORY</b>						
1.	MA6451	Probability and Random Processes	3	1	0	4
2.	EC6401	<u>Electronic Circuits II</u>	3	0	0	3
3.	EC6402	<u>Communication Theory</u>	3	0	0	3
4.	EC6403	Electromagnetic Fields	3	1	0	4
5.	EC6404	<u>Linear Integrated Circuits</u>	3	0	0	3
6.	EC6405	<u>Control System Engineering</u>	3	0	0	3
<b>PRACTICAL</b>						
7.	EC6411	<u>Circuit and Simulation Integrated Laboratory</u>	0	0	3	2
8.	EC6412	<u>Linear Integrated Circuit Laboratory</u>	0	0	3	2
9.	EE6461	<u>Electrical Engineering and Control System Laboratory</u>	0	0	3	2
<b>TOTAL</b>			<b>18</b>	<b>2</b>	<b>9</b>	<b>26</b>



### SEMESTER V

SL. No.	COURSE CODE	COURSE TITLE	L	T	P	C
<b>THEORY</b>						
1.	EC6501	<u>Digital Communication</u>	3	0	0	3
2.	EC6502	<u>Principles of Digital Signal Processing</u>	3	1	0	4
3.	EC6503	<u>Transmission Lines and Wave Guides</u>	3	1	0	4
4.	GE6351	<u>Environmental Science and Engineering</u>	3	0	0	3
5.	EC6504	<u>Microprocessor and Microcontroller</u>	3	0	0	3
<b>PRACTICAL</b>						
6.	EC6511	<u>Digital Signal Processing Laboratory</u>	0	0	3	2
7.	EC6512	<u>Communication System Laboratory</u>	0	0	3	2
8.	EC6513	<u>Microprocessor and Microcontroller Laboratory</u>	0	0	3	2
		<b>TOTAL</b>	<b>15</b>	<b>2</b>	<b>9</b>	<b>23</b>

### SEMESTER VI

SL. No.	COURSE CODE	COURSE TITLE	L	T	P	C
<b>THEORY</b>						
1.	MG6851	<u>Principles of Management</u>	3	0	0	3
2.	CS6303	<u>Computer Architecture</u>	3	0	0	3
3.	CS6551	<u>Computer Networks</u>	3	0	0	3
4.	EC6601	<u>VLSI Design</u>	3	0	0	3
5.	EC6602	<u>Antenna and Wave propagation</u>	3	0	0	3
6.		Elective I	3	0	0	3
<b>PRACTICAL</b>						
7.	EC6611	<u>Computer Networks Laboratory</u>	0	0	3	2
8.	EC6612	<u>VLSI Design Laboratory</u>	0	0	3	2
9.	GE6674	<u>Communication and Soft Skills - Laboratory Based</u>	0	0	4	2
		<b>TOTAL</b>	<b>18</b>	<b>0</b>	<b>10</b>	<b>24</b>

### SEMESTER VII

SL. No.	COURSE CODE	COURSE TITLE	L	T	P	C
<b>THEORY</b>						
1.	EC6701	<u>RF and Microwave Engineering</u>	3	0	0	3
2.	EC6702	<u>Optical Communication and Networks</u>	3	0	0	3
3.	EC6703	<u>Embedded and Real Time Systems</u>	3	0	0	3
4.		Elective II	3	0	0	3
5.		Elective III	3	0	0	3
6.		Elective IV	3	0	0	3
<b>PRACTICAL</b>						
7.	EC6711	<u>Embedded Laboratory</u>	0	0	3	2
8.	EC6712	<u>Optical and Microwave Laboratory</u>	0	0	3	2
<b>TOTAL</b>			<b>18</b>	<b>0</b>	<b>6</b>	<b>22</b>

### SEMESTER VIII

SL. No.	COURSE CODE	COURSE TITLE	L	T	P	C
<b>THEORY</b>						
1.	EC6801	<u>Wireless Communication</u>	3	0	0	3
2.	EC6802	<u>Wireless Networks</u>	3	0	0	3
3.		Elective V	3	0	0	3
4.		Elective VI	3	0	0	3
<b>PRACTICAL</b>						
5.	EC6811	<u>Project Work</u>	0	0	12	6
<b>TOTAL</b>			<b>12</b>	<b>0</b>	<b>12</b>	<b>18</b>

**TOTAL CREDITS:189**

### SEMESTER VI

#### ELECTIVE – I

SL. No.	COURSE CODE	COURSE TITLE	L	T	P	C
1.	EC6001	<u>Medical Electronics</u>	3	0	0	3
2.	EC6002	<u>Advanced Digital Signal Processing</u>	3	0	0	3
3.	CS6401	<u>Operating Systems</u>	3	0	0	3
4.	EC6003	<u>Robotics and Automation</u>	3	0	0	3

**SEMESTER VII****ELECTIVE- II**

<b>SL. No.</b>	<b>COURSE CODE</b>	<b>COURSE TITLE</b>	<b>L</b>	<b>T</b>	<b>P</b>	<b>C</b>
5.	EC6004	<u>Satellite Communication</u>	3	0	0	3
6.	EC6005	<u>Electronic Testing</u>	3	0	0	3
7.	EC6006	Avionics	<b>3</b>	<b>0</b>	<b>0</b>	<b>3</b>
8.	CS6012	<u>Soft Computing</u>	3	0	0	3
9.	IT6005	<u>Digital Image Processing</u>	3	0	0	3
10.	CS6013	Foundation Skills in Integrated Product Development	3	0	0	3

**ELECTIVE- III**

<b>SL. No.</b>	<b>COURSE CODE</b>	<b>COURSE TITLE</b>	<b>L</b>	<b>T</b>	<b>P</b>	<b>C</b>
11.	EC6007	<u>Speech Processing</u>	3	0	0	3
12.	EC6008	<u>Web Technology</u>	3	0	0	3
13.	EC6009	<u>Advanced Computer Architecture</u>	3	0	0	3
14.	EC 6010	<u>Electronics Packaging</u>	3	0	0	3
15.	EC6011	<u>Electro Magnetic Interference and Compatibility</u>	3	0	0	3

**ELECTIVE - IV**

<b>SL. No.</b>	<b>COURSE CODE</b>	<b>COURSE TITLE</b>	<b>L</b>	<b>T</b>	<b>P</b>	<b>C</b>
16.	EC6012	<u>CMOS Analog IC Design</u>	3	0	0	3
17.	EC6013	<u>Advanced Microprocessors and Microcontrollers</u>	3	0	0	3
18.	EC6014	<u>Cognitive Radio</u>	<b>3</b>	<b>0</b>	<b>0</b>	<b>3</b>
19.	EC6015	<u>Radar and Navigational Aids</u>	3	0	0	3
20.	EC6016	<u>Opto Electronic Devices</u>	3	0	0	3

**SEMESTER VIII****ELECTIVE –V**

<b>SL. No.</b>	<b>COURSE CODE</b>	<b>COURSE TITLE</b>	<b>L</b>	<b>T</b>	<b>P</b>	<b>C</b>
21.	EC6017	<u>RF System Design</u>	3	0	0	3
22.	CS6003	<u>Ad hoc and Sensors Networks</u>	3	0	0	3
23.	GE6082	<u>Indian Constitution and Society</u>	3	0	0	3
24.	EC6018	<u>Multimedia Compression and Communication</u>	3	0	0	3
25.	GE6075	<u>Professional Ethics in Engineering</u>	3	0	0	3
26.	GE6083	Disaster Management	3	0	0	3

**ELECTIVE – VI**

<b>SL. No.</b>	<b>COURSE CODE</b>	<b>COURSE TITLE</b>	<b>L</b>	<b>T</b>	<b>P</b>	<b>C</b>
27.	EC6019	<u>Data Converters</u>	3	0	0	3
28.	CS6701	<u>Cryptography and Network Security</u>	3	0	0	3
29.	GE6757	<u>Total Quality Management</u>	3	0	0	3
30.	MG6071	<u>Entrepreneurship Development</u>	3	0	0	3
31.	MG6088	<u>Software Project Management</u>	3	0	0	3
32.	GE6084	Human Rights	3	0	0	3

**ANNA UNIVERSITY, CHENNAI**  
**AFFILIATED INSTITUTIONS**  
**R - 2013**

**B.E. MECHANICAL ENGINEERING**  
**I – VIII SEMESTERS CURRICULUM AND SYLLABUS**

**SEMESTER I**

SL. No.	COURSE CODE	COURSE TITLE	L	T	P	C
<b>THEORY</b>						
1.	HS6151	<u>Technical English – I</u>	3	1	0	4
2.	MA6151	<u>Mathematics – I</u>	3	1	0	4
3.	PH6151	<u>Engineering Physics – I</u>	3	0	0	3
4.	CY6151	<u>Engineering Chemistry – I</u>	3	0	0	3
5.	GE6151	<u>Computer Programming</u>	3	0	0	3
6.	GE6152	<u>Engineering Graphics</u>	2	0	3	4
<b>PRACTICALS</b>						
7.	GE6161	<u>Computer Practices Laboratory</u>	0	0	3	2
8.	GE6162	<u>Engineering Practices Laboratory</u>	0	0	3	2
9.	GE6163	<u>Physics and Chemistry Laboratory - I</u>	0	0	2	1
<b>TOTAL</b>			<b>17</b>	<b>2</b>	<b>11</b>	<b>26</b>

**SEMESTER II**

SL. No.	COURSE CODE	COURSE TITLE	L	T	P	C
<b>THEORY</b>						
1.	HS6251	<u>Technical English – II</u>	3	1	0	4
2.	MA6251	<u>Mathematics – II</u>	3	1	0	4
3.	PH6251	<u>Engineering Physics – II</u>	3	0	0	3
4.	CY6251	<u>Engineering Chemistry – II</u>	3	0	0	3
5.	GE6252	<u>Basic Electrical and Electronics Engineering</u>	4	0	0	4
6.	GE6253	<u>Engineering Mechanics</u>	3	1	0	4
<b>PRACTICALS</b>						
7.	GE6261	<u>Computer Aided Drafting and Modeling Laboratory</u>	0	1	2	2
8.	GE6262	<u>Physics and Chemistry Laboratory - II</u>	0	0	2	1
<b>TOTAL</b>			<b>19</b>	<b>4</b>	<b>4</b>	<b>25</b>

### SEMESTER III

SL. NO.	COURSE CODE	COURSE TITLE	L	T	P	C
<b>THEORY</b>						
1.	MA6351	Transforms and Partial Differential Equations	3	1	0	4
2.	CE6306	Strength of Materials	3	1	0	4
3.	ME6301	Engineering Thermodynamics	3	0	0	3
4.	CE6451	Fluid Mechanics and Machinery	3	0	0	3
5.	ME6302	Manufacturing Technology - I	3	0	0	3
6.	EE6351	Electrical Drives and Controls	3	0	0	3
<b>PRACTICAL</b>						
7.	ME6311	Manufacturing Technology Laboratory - I	0	0	3	2
8.	CE6461	Fluid Mechanics and Machinery Laboratory	0	0	3	2
9.	EE6365	Electrical Engineering Laboratory	0	0	3	2
<b>TOTAL</b>			<b>18</b>	<b>2</b>	<b>9</b>	<b>26</b>

### SEMESTER IV

SL. NO.	COURSE CODE	COURSE TITLE	L	T	P	C
<b>THEORY</b>						
1.	MA6452	Statistics and Numerical Methods	3	1	0	4
2.	ME6401	Kinematics of Machinery	3	0	0	3
3.	ME6402	Manufacturing Technology– II	3	0	0	3
4.	ME6403	Engineering Materials and Metallurgy	3	0	0	3
5.	GE6351	Environmental Science and Engineering	3	0	0	3
6.	ME6404	Thermal Engineering	3	0	0	3
<b>PRACTICAL</b>						
7.	ME6411	Manufacturing Technology Laboratory–II	0	0	3	2
8.	ME6412	Thermal Engineering Laboratory - I	0	0	3	2
9.	CE6315	Strength of Materials Laboratory	0	0	3	2
<b>TOTAL</b>			<b>18</b>	<b>1</b>	<b>9</b>	<b>25</b>

### SEMESTER V

SL. NO.	COURSE CODE	COURSE TITLE	L	T	P	C
<b>THEORY</b>						
1.	ME6501	Computer Aided Design	3	0	0	3
2.	ME6502	Heat and Mass Transfer	3	0	0	3
3.	ME6503	Design of Machine Elements	3	0	0	3
4.	ME6504	Metrology and Measurements	3	0	0	3
5.	ME6505	Dynamics of Machines	3	0	0	3
6.	GE6075	Professional Ethics in Engineering	3	0	0	3
<b>PRACTICAL</b>						
7.	ME6511	Dynamics Laboratory	0	0	3	2
8.	ME6512	Thermal Engineering Laboratory-II	0	0	3	2
9.	ME6513	Metrology and Measurements Laboratory	0	0	3	2
<b>TOTAL</b>			<b>18</b>	<b>0</b>	<b>9</b>	<b>24</b>

### SEMESTER VI

SL. NO.	COURSE CODE	COURSE TITLE	L	T	P	C
<b>THEORY</b>						
1.	ME6601	Design of Transmission Systems	3	0	0	3
2.	MG6851	Principles of Management	3	0	0	3
3.	ME6602	Automobile Engineering	3	0	0	3
4.	ME6603	Finite Element Analysis	3	0	0	3
5.	ME6604	Gas Dynamics and Jet Propulsion	3	0	0	3
6.		Elective - I	3	0	0	3
<b>PRACTICAL</b>						
7.	ME6611	C.A.D. / C.A.M. Laboratory	0	0	3	2
8.	ME6612	Design and Fabrication Project	0	0	4	2
9.	GE6674	Communication and Soft Skills- Laboratory Based	0	0	4	2
<b>TOTAL</b>			<b>18</b>	<b>0</b>	<b>11</b>	<b>24</b>

### SEMESTER VII

SL. NO.	COURSE CODE	COURSE TITLE	L	T	P	C
<b>THEORY</b>						
1.	ME6701	Power Plant Engineering	3	0	0	3
2.	ME6702	Mechatronics	3	0	0	3
3.	ME6703	Computer Integrated Manufacturing Systems	3	0	0	3
4.	GE6757	Total Quality Management	3	0	0	3
5.		Elective – II	3	0	0	3
6.		Elective – III	3	0	0	3
<b>PRACTICAL</b>						
7.	ME6711	Simulation and Analysis Laboratory	0	0	3	2
8.	ME6712	Mechatronics Laboratory	0	0	3	2
9.	ME6713	Comprehension	0	0	2	1
<b>TOTAL</b>			<b>18</b>	<b>0</b>	<b>8</b>	<b>23</b>

### SEMESTER VIII

SL. NO.	COURSE CODE	COURSE TITLE	L	T	P	C
<b>THEORY</b>						
1.	MG6863	<u>Engineering Economics</u>	3	0	0	3
2.		Elective – IV	3	0	0	3
3.		Elective – V	3	0	0	3
<b>PRACTICAL</b>						
4.	ME6811	<u>Project Work</u>	0	0	12	6
<b>TOTAL</b>			<b>9</b>	<b>0</b>	<b>12</b>	<b>15</b>

**TOTAL NUMBER OF CREDITS TO BE EARNED FOR AWARD OF THE DEGREE = 188**

### ELECTIVES FOR B.E. MECHANICAL ENGINEERING

#### SEMESTER VI

##### Elective I

SL. NO.	COURSE CODE	COURSE TITLE	L	T	P	C
1.	MG6072	<u>Marketing Management</u>	3	0	0	3
2.	ME6001	Quality Control and Reliability Engineering	3	0	0	3
3.	ME6002	Refrigeration and Air conditioning	3	0	0	3
4.	ME6003	Renewable Sources of Energy	3	0	0	3
5.	ME6004	Unconventional Machining Processes	3	0	0	3

#### SEMESTER VII

##### Elective II

SL. NO.	COURSE CODE	COURSE TITLE	L	T	P	C
1.	ME6005	Process Planning and Cost Estimation	3	0	0	3
2.	ME6006	Design of Jigs, Fixtures and Press Tools	3	0	0	3
3.	ME6007	Composite Materials and Mechanics	3	0	0	3
4.	ME6008	Welding Technology	3	0	0	3
5.	ME6009	Energy Conservation and Management	3	0	0	3
6.	GE6083	Disaster Management	3	0	0	3

##### Elective III

SL. NO.	COURSE CODE	COURSE TITLE	L	T	P	C
1.	ME6010	Robotics	3	0	0	3
2.	GE6081	Fundamentals of Nanoscience	3	0	0	3
3.	ME6011	Thermal Turbo Machines	3	0	0	3
4.	ME6012	Maintenance Engineering	3	0	0	3
5.	EE6007	<u>Micro Electro Mechanical Systems</u>	3	0	0	3
6.	ME6021	<u>Hydraulics and Pneumatics</u>	3	0	0	3



**SEMESTER-VIII**  
**Elective IV**

<b>SL. NO.</b>	<b>COURSE CODE</b>	<b>COURSE TITLE</b>	<b>L</b>	<b>T</b>	<b>P</b>	<b>C</b>
1.	IE6605	Production Planning and Control	3	0	0	3
2.	MG6071	Entrepreneurship Development	3	0	0	3
3.	ME6013	Design of Pressure Vessels and Piping	3	0	0	3
4.	ME6014	Computational Fluid Dynamics	3	0	0	3
5.	ME6015	Operations Research	3	0	0	3
6.	GE6084	Human Rights	3	0	0	3

**Elective V**

<b>SL. NO.</b>	<b>COURSE CODE</b>	<b>COURSE TITLE</b>	<b>L</b>	<b>T</b>	<b>P</b>	<b>C</b>
1.	ME6016	Advanced I.C. Engines	3	0	0	3
2.	ME6017	Design of Heat Exchangers	3	0	0	3
3.	ME6018	Additive Manufacturing	3	0	0	3
4.	ME6019	Non Destructive Testing and Materials	3	0	0	3
5.	ME6020	Vibration and Noise Control	3	0	0	3

**AFFILIATED INSTITUTIONS****ANNA UNIVERSITY: : CHENNAI 600 025****REGULATIONS - 2013****I TO IV SEMESTERS (FULL TIME) CURRICULUM AND SYLLABUS****MASTER OF BUSINESS ADMINISTRATION (MBA)****SEMESTER – I**

SL.NO.	CODE NO.	COURSE TITLE	L	T	P	C
<b>THEORY</b>						
1.	BA7101	Principles of Management	3	0	0	3
2.	BA7102	Statistics for Management	3	1	0	4
3.	BA7103	Economic Analysis for Business	4	0	0	4
4.	BA7104	Total Quality Management	3	0	0	3
5.	BA7105	Organizational Behaviour	3	0	0	3
6.	BA7106	Accounting for Management	3	1	0	4
7.	BA7107	Legal Aspects of Business	3	0	0	3
8.	BA7108	Written Communication	3	0	0	3
<b>TOTAL</b>			<b>25</b>	<b>2</b>	<b>0</b>	<b>27</b>

**SEMESTER – II**

SL.NO.	CODE NO.	COURSE TITLE	L	T	P	C
<b>THEORY</b>						
1.	BA7201	Operations Management	3	0	0	3
2.	BA7202	Financial Management	3	0	0	3
3.	BA7203	Marketing Management	4	0	0	4
4.	BA7204	Human Resource Management	3	0	0	3
5.	BA7205	Information Management	3	0	0	3
6.	BA7206	Applied Operations Research	3	1	0	4
7.	BA7207	Business Research Methods	3	0	0	3
<b>PRACTICAL</b>						
8.	BA7211	Data Analysis and Business Modeling	0	0	4	2
<b>TOTAL</b>			<b>22</b>	<b>1</b>	<b>4</b>	<b>25</b>

**SUMMER SEMESTER (4 WEEKS)****SUMMER TRAINING**

Summer Training – The training report along with the company certificate should be submitted within the two weeks of the reopening date of 3<sup>rd</sup> semester. The training report should be around 40 pages containing the details of training undergone, the departments wherein he was trained with duration (chronological diary), along with the type of managerial skills developed during training. The training report should be sent to the Controller of Examinations by the HOD through the Principal, before the last working day of the 3<sup>rd</sup> Semester.

**SEMESTER – III**

SL.NO.	CODE NO.	COURSE TITLE	L	T	P	C
<b>THEORY</b>						
1.	BA7301	Enterprise Resource Planning	3	0	0	3
2.	BA7302	Strategic Management	3	0	0	3
3.	E1	Elective I	3	0	0	3
4.	E2	Elective II	3	0	0	3
5.	E3	Elective III	3	0	0	3
6.	E4	Elective IV	3	0	0	3
7.	E5	Elective V	3	0	0	3
8.	E6	Elective VI	3	0	0	3
<b>PRACTICAL</b>						
9.	BA7311	Professional Skill Development	0	0	4	2
10.	BA7312	Summer Training	0	0	2	1
<b>TOTAL</b>			<b>24</b>	<b>0</b>	<b>6</b>	<b>27</b>

**SEMESTER – IV**

SL.NO.	CODE NO.	COURSE TITLE	L	T	P	C
<b>THEORY</b>						
1.	BA7401	International Business Management	3	0	0	3
2.	BA7402	Business Ethics, Corporate Social Responsibility and Governance	3	0	0	3
<b>PRACTICAL</b>						
3.	BA7411	Creativity and Innovation	0	0	4	2
4.	BA7412	Project Work	0	0	18	9
<b>TOTAL</b>			<b>6</b>	<b>0</b>	<b>22</b>	<b>17</b>

**TOTAL NUMBER OF CREDITS = 96**

## LIST OF ELECTIVES

### MASTER OF BUSINESS ADMINISTRATION (MBA)

SL.NO.	COURSE CODE	COURSE TITLE	L	T	P	C
<b>MARKETING – ELECTIVES</b>						
1	BA7011	Brand Management	3	0	0	3
2	BA7012	Retail Management	3	0	0	3
3	BA7013	Services Marketing	3	0	0	3
4	BA7014	Integrated Marketing Communication	3	0	0	3
5	BA7015	Customer Relationship Management	3	0	0	3
6	BA7016	Rural Marketing	3	0	0	3
<b>FINANCE – ELECTIVES</b>						
1	BA7021	Security Analysis and Portfolio Management	3	0	0	3
2	BA7022	Merchant Banking and Financial Services	3	0	0	3
3	BA7023	International Trade Finance	3	0	0	3
4	BA7024	Corporate Finance	3	0	0	3
5	BA7025	Micro Finance	3	0	0	3
6	BA7026	Banking Financial Services Management	3	0	0	3
<b>HUMAN RESOURCE – ELECTIVES</b>						
1	BA7031	Managerial Behavior and Effectiveness	3	0	0	3
2	BA7032	Entrepreneurship Development	3	0	0	3
3	BA7033	Organizational Theory, Design & Development	3	0	0	3
4	BA7034	Industrial Relations & Labour Welfare	3	0	0	3
5	BA7035	Labour Legislations	3	0	0	3
6	BA7036	Strategic Human Resource Management	3	0	0	3
<b>SYSTEMS - ELECTIVES</b>						
1	BA7041	Advanced Database Management Systems	3	0	0	3
2	BA7042	e-Business Management	3	0	0	3
3	BA7043	Software Project and Quality Management	3	0	0	3
4	BA7044	Datamining for Business Intelligence	3	0	0	3
<b>OPERATIONS – ELECTIVES</b>						
1	BA7051	Logistics and Supply Chain Management	3	0	0	3
2	BA7052	Services Operations Management	3	0	0	3
3	BA7053	Project Management	3	0	0	3
4	BA7054	Lean Six Sigma	3	0	0	3
<b>SHIPPING AND LOGISTICS MANAGEMENT- ELECTIVES</b>						
1.	BA7061	Containerization and Allied Business	3	0	0	3
2.	BA7062	Exim Management	3	0	0	3
3.	BA7063	Fundamentals of Shipping	3	0	0	3
4.	BA7064	Port and Terminal Management	3	0	0	3

Note: Three electives from two specializations from among the 5 areas of specialization are to be chosen by the students

**AFFILIATED INSTITUTIONS**  
**ANNA UNIVERSITY :: CHENNAI 600 025**  
**REGULATIONS - 2013**

**M.E. CONSTRUCTION ENGINEERING AND MANAGEMENT**  
**I TO IV SEMESTERS (FULL TIME) CURRICULUM AND SYLLABUS**

**SEMESTER I**

SL. NO.	COURSE CODE	COURSE TITLE	L	T	P	C
<b>THEORY</b>						
1.	MA7152	Statistical Methods for Engineers	3	1	0	4
2.	CN7101	Modern Construction Materials	3	0	0	3
3.	CN7102	Construction Equipment	3	0	0	3
4.	CN7103	Project Formulation and Appraisal	3	0	0	3
5.	CN7104	Quantitative Techniques in Management	3	0	0	3
6.		Elective I	3	0	0	3
<b>TOTAL</b>			<b>18</b>	<b>1</b>	<b>0</b>	<b>19</b>

**SEMESTER II**

SL. NO.	COURSE CODE	COURSE TITLE	L	T	P	C
<b>THEORY</b>						
1.	CN7201	Advanced Construction Techniques	3	0	0	3
2.	CN7202	Contract Laws and Regulations	3	0	0	3
3.	CN7203	Construction Planning, Scheduling and Control	3	0	0	3
4.	CN7204	Computer Applications in Construction Engineering and Planning	2	0	2	3
5.		Elective II	3	0	0	3
6.		Elective III	3	0	0	3
<b>PRACTICAL</b>						
7.	CN7211	Advanced Construction Engineering and Computing Techniques Laboratory	0	0	4	2
<b>TOTAL</b>			<b>17</b>	<b>0</b>	<b>6</b>	<b>20</b>

**SEMESTER III**

SL. NO.	COURSE CODE	COURSE TITLE	L	T	P	C
<b>THEORY</b>						
1.		Elective IV	3	0	0	3
2.		Elective V	3	0	0	3
3.		Elective VI	3	0	0	3
<b>PRACTICAL</b>						
4.	CN7311	Practical Training (4 Weeks)	-	-	-	1
5.	CN7312	Project Work (Phase I)	0	0	12	6
6.	CN7313	Seminar	0	0	2	1
<b>TOTAL</b>			<b>9</b>	<b>0</b>	<b>14</b>	<b>17</b>

### SEMESTER IV

SL. NO.	COURSE CODE	COURSE TITLE	L	T	P	C
<b>PRACTICAL</b>						
1.	CN7411	Project Work (Phase II)	0	0	24	12
<b>TOTAL</b>			<b>0</b>	<b>0</b>	<b>24</b>	<b>12</b>

**TOTAL CREDITS TO BE EARNED FOR THE AWARD OF THE DEGREE: 68**

### LIST OF ELECTIVES

SL. NO.	COURSE CODE	COURSE TITLE	L	T	P	C
<b>(Elective I)</b>						
1.	CN7001	Advanced Concrete Technology	3	0	0	3
2.	CN7002	Shoring, Scaffolding and Formwork	3	0	0	3
<b>(Elective II &amp; III)</b>						
3.	CN7003	System Integration in Construction	3	0	0	3
4.	CN7004	Energy Efficient Buildings	3	0	0	3
5.	CN7005	Construction Project Management	3	0	0	3
6.	CN7006	Construction Personnel Management	3	0	0	3
<b>(Elective IV,V,VI)</b>						
7.	CN7007	Quality Control and Assurance in Construction	3	0	0	3
8.	CN7008	Economics and Finance Management in Construction	3	0	0	3
9.	CN7009	Resource Management and Control in Construction	3	0	0	3
10.	CN7010	Project Safety Management	3	0	0	3
11.	CN7011	Management Information Systems	3	0	0	3

**ANNA UNIVERSITY, CHENNAI**  
**AFFILIATED INSTITUTIONS**  
**REGULATIONS 2013**  
**M.E. ENGINEERING DESIGN**  
**I TO IV SEMESTERS (FULL TIME) CURRICULUM AND SYLLABUS**

**SEMESTER I**

SL. NO	COURSE CODE	COURSE TITLE	L	T	P	C
<b>THEORY</b>						
1.	MA7169	Advanced Numerical Methods	3	1	0	4
2.	ED7101	Advanced Mechanics of Materials	3	0	0	3
3.	ED7102	Computer Applications in Design	3	0	2	4
4.	ED7103	Quality Concepts in Design	3	0	0	3
5.	ED7104	Vibration Analysis and Control	3	0	2	4
6.		Elective I	3	0	0	3
<b>PRACTICAL</b>						
7.	ED7111	CAD Laboratory	0	0	2	1
<b>TOTAL</b>			<b>18</b>	<b>1</b>	<b>6</b>	<b>22</b>

**SEMESTER II**

SL. NO	COURSE CODE	COURSE TITLE	L	T	P	C
<b>THEORY</b>						
1.	ED7201	Finite Element Methods in Mechanical Design	3	1	0	4
2.	ED7202	Mechanisms Design and Simulation	3	0	2	4
3.	ED7203	Mechanical Behavior of Materials	3	0	0	3
4.	ED7204	Integrated Mechanical Design	3	1	0	4
5.		Elective II	3	0	0	3
6.		Elective III	3	0	0	3
<b>PRACTICAL</b>						
7.	ED7211	Analysis and Simulation Laboratory	0	0	2	1
8.	ED7212	Design Project	0	0	3	2
<b>TOTAL</b>			<b>18</b>	<b>2</b>	<b>7</b>	<b>24</b>

**SEMESTER III**

SL. NO	COURSE CODE	COURSE TITLE	L	T	P	C
<b>THEORY</b>						
1.		Elective IV	3	0	0	3
2.		Elective V	3	0	0	3
3.		Elective VI	3	0	0	3
<b>PRACTICAL</b>						
4.	ED7311	Project Work (Phase I)	0	0	12	6
<b>TOTAL</b>			<b>9</b>	<b>0</b>	<b>12</b>	<b>15</b>

### SEMESTER IV

SL. NO	COURSE CODE	COURSE TITLE	L	T	P	C
<b>PRACTICAL</b>						
1.	ED7411	Project Work (Phase II )	0	0	24	12
<b>TOTAL</b>			<b>0</b>	<b>0</b>	<b>24</b>	<b>12</b>

**TOTAL CREDITS TO BE EARNED FOR THE AWARD OF THE DEGREE = 73**

### LIST OF ELECTIVES FOR M.E. ENGINEERING DESIGN

#### SEMESTER I (Elective I)

SL. NO	COURSE CODE	COURSE TITLE	L	T	P	C
1	ED7001	Optimization Techniques in Design	3	0	0	3
2.	ED7003	Composite Materials and Mechanics	3	0	0	3
3	ED7005	Design of Material Handling Equipments	3	0	0	3

#### SEMESTER II (Elective II & III)

SL. NO	COURSE CODE	COURSE TITLE	L	T	P	C
1	ED7006	Plates and Shells	3	0	0	3
2.	ED7007	Modal Analysis of Mechanical Systems	3	0	0	3
3.	ED7008	Advanced Metal Forming Techniques	3	0	0	3
4.	ED7010	Tribology in Design	3	0	0	3
5.	ED7012	Surface Engineering	3	0	0	3

#### SEMESTER III (Elective IV, V & VI)

SL. NO	COURSE CODE	COURSE TITLE	L	T	P	C
1.	ED7002	Engineering Fracture Mechanics	3	0	0	3
2.	ED7004	Design of Hydraulic and Pneumatic Systems	3	0	0	3
3	ED7009	Design of Pressure Vessel and Piping	3	0	0	3
4.	ED7011	Bearing Design and Rotor Dynamics	3	0	0	3
5	ED7013	Advanced Finite Element Analysis	3	0	0	3
6	IC7072	Computational Fluid Dynamics	3	0	0	3
7	CC7201	Design for Manufacture Assembly and Environments	3	0	0	3