

7.1 Institutional Values and Social Responsibilities

7.1.7. The Institution has disabled-friendly, barrier free environment

1. Built environment with ramps/lifts for easy access to classrooms.
2. Disabled-friendly washrooms
3. Signage including tactile path, lights, display boards and signposts
4. Assistive technology and facilities for persons with disabilities (*Divyangjan*) accessible website, screen-reading software, mechanized equipment
5. Provision for enquiry and information: Human assistance, reader, scribe, soft copies of reading material, screen reading

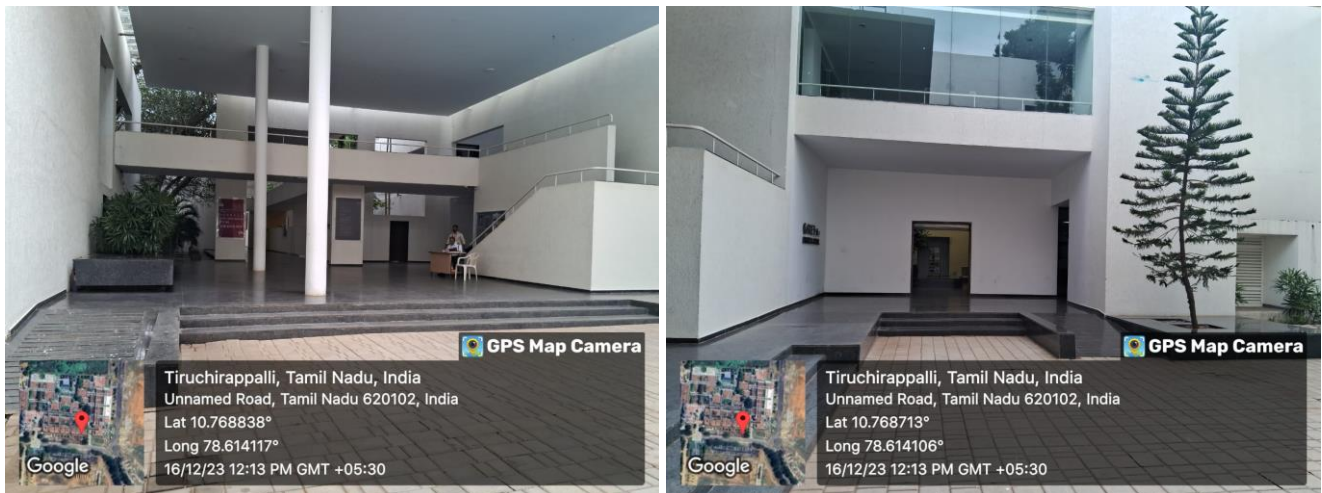


Fig. 7.1.7.1 Four feet ramp in and around the campus

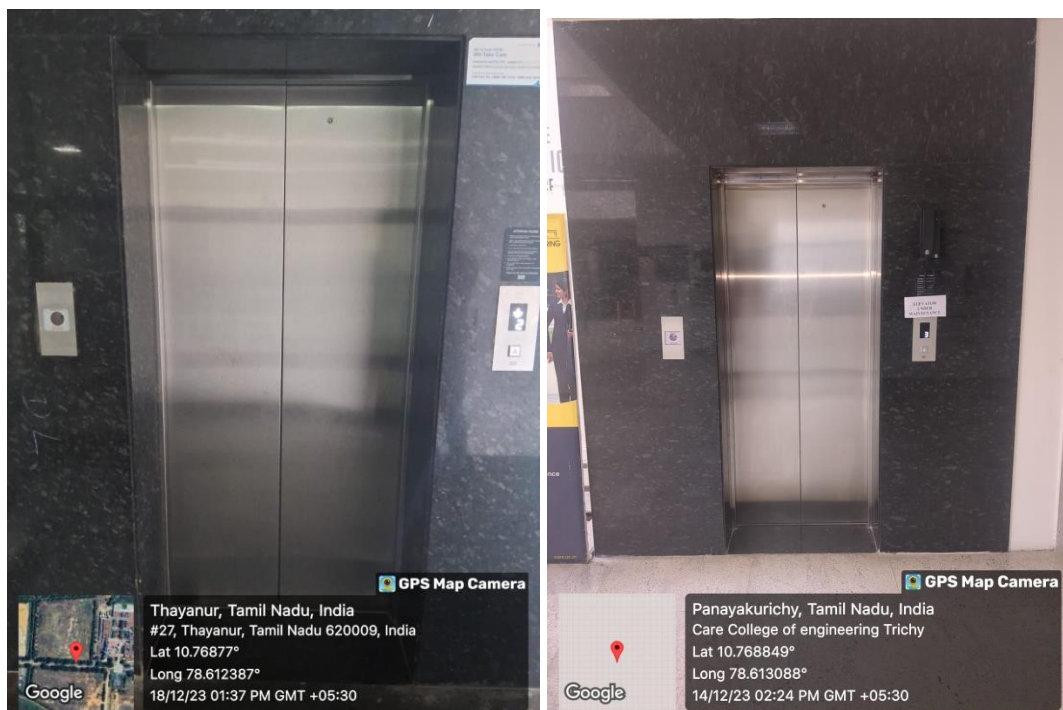


Fig. 7.1.7.2 Two Lifts for disabled friendly vertical access

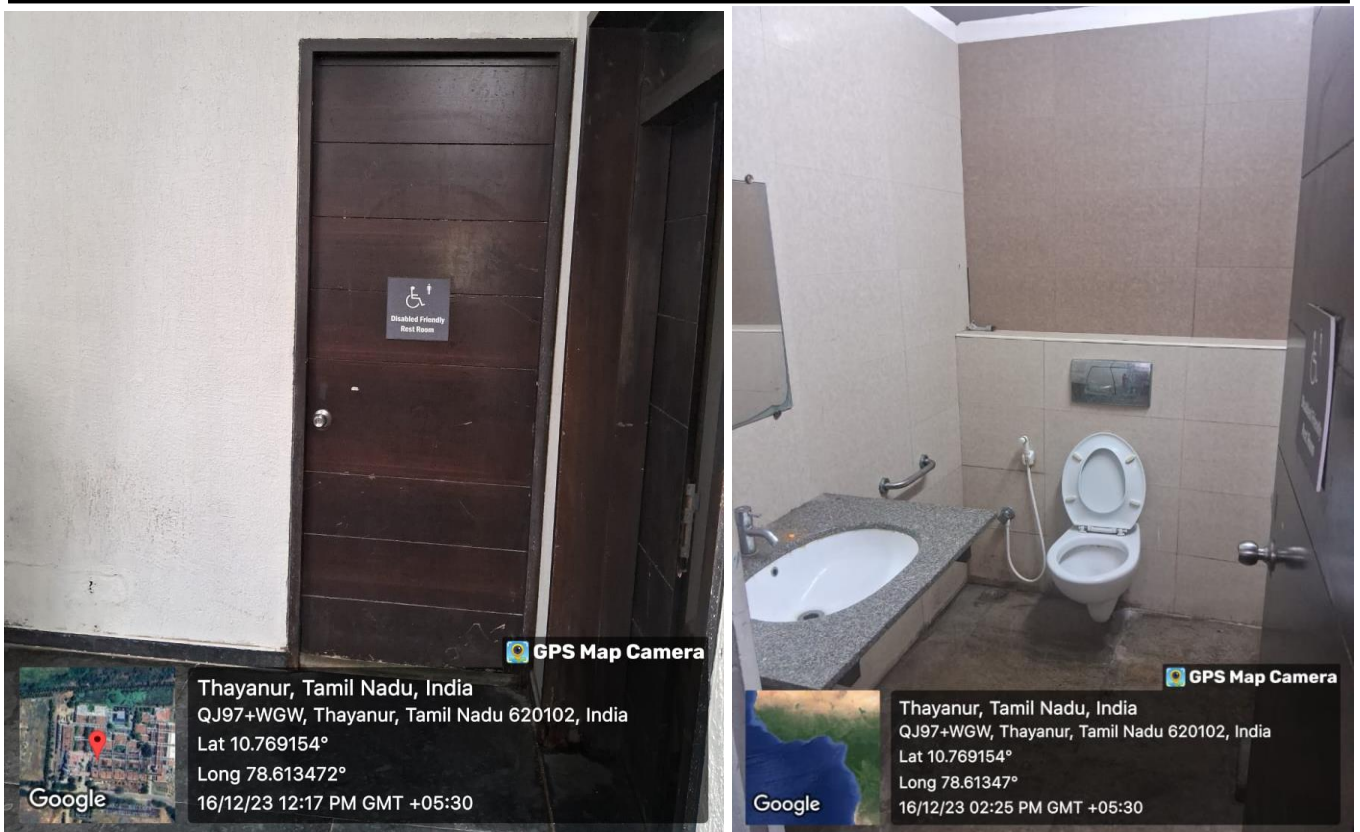


Fig. 7.1.7.3 Disabled Friendly Washrooms – Male

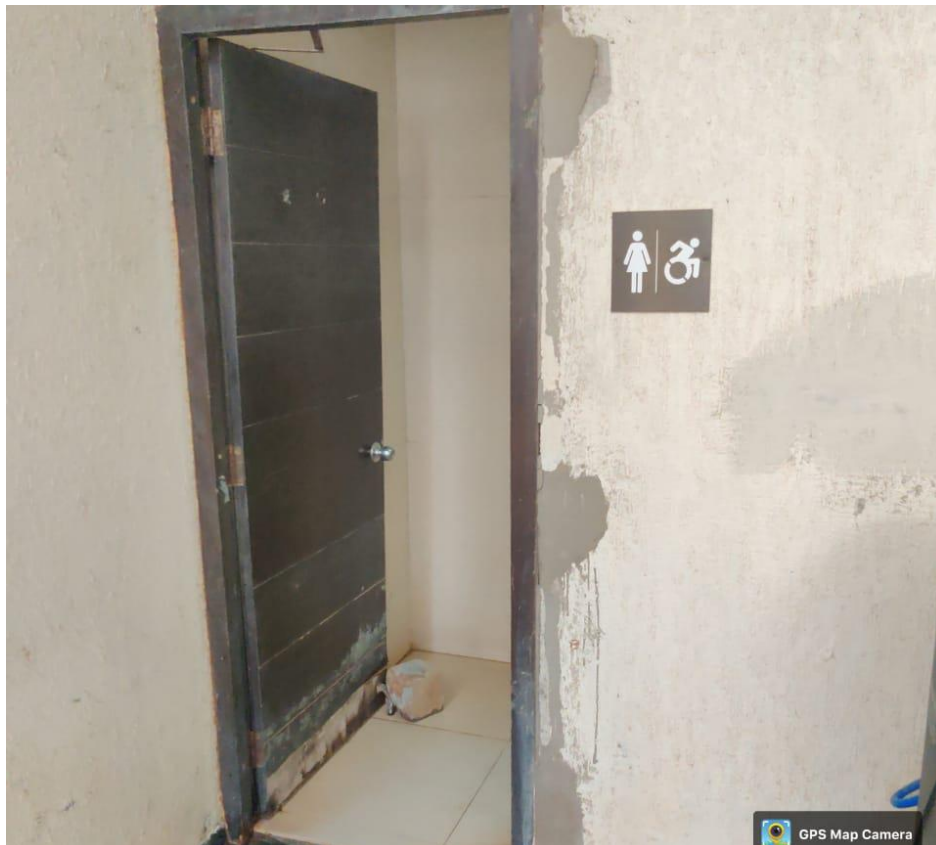


Fig. 7.1.7.4 Disabled Friendly Washrooms – Female



Fig. 7.1.7.5 Signage Boards



Fig. 7.1.7.6 Height Adjustable Wheelchair