

Criterion 4	Infrastructure and Learning Resources	100
-------------	---------------------------------------	-----

4.1 Physical Facilities

4.1.3 Percentage of classrooms and seminar halls with ICT-enabled facilities such as smart class, LMS, etc.

The institution comprises a total of 30 classrooms and 5 seminar halls with full air conditioning, standby Audio-Visual units and proper seating requirements. In addition to this, we have a wide covered auditorium with 2000 seating capacity. Information Communication Technologies (ICT) facilities such as smart boards and Learning Management System (LMS) are also being installed in the campus to indulge in advanced methodologies for effective and enjoyable learning of the students.



Figure 4.1.3.a. Conference Hall (Fulcrum)

We name our seminar / Conference halls as Fulcrum, Biz Walt, Think Tank and The Summit based on their location and the optimized purpose of the halls and are allocated based on the nature of events to be held.

J. Shanthi

PRINCIPAL
CARE COLLEGE OF ENGINEERING
No. 27, Thayanur, Trichy-620 009.

CARE COLLEGE OF ENGINEERING

Approved by AICTE, New Delhi | Affiliated to Anna University, Chennai
Accredited by NAAC with 'A' Grade
#27, Thayanur, Tiruchirappalli - 620009



Figure 4.1.3.b. Fulcrum Conference Hall



Figure 4.1.3.c. Seminar Hall-02

All these halls are fully air conditioned and the seats are positioned with architecture and aesthetics in mind to better visual communication and seamless hearing. The halls are designed in such a manner to use both natural lighting via transparent windows and also provided with shades to be used while presentation activities.

S. Shanthi

PRINCIPAL
CARE COLLEGE OF ENGINEERING
No. 27, Thayanur, Trichy-620 009.

CARE COLLEGE OF ENGINEERING

Approved by AICTE, New Delhi | Affiliated to Anna University, Chennai
Accredited by NAAC with 'A' Grade
#27, Thayanur, Tiruchirappalli - 620009

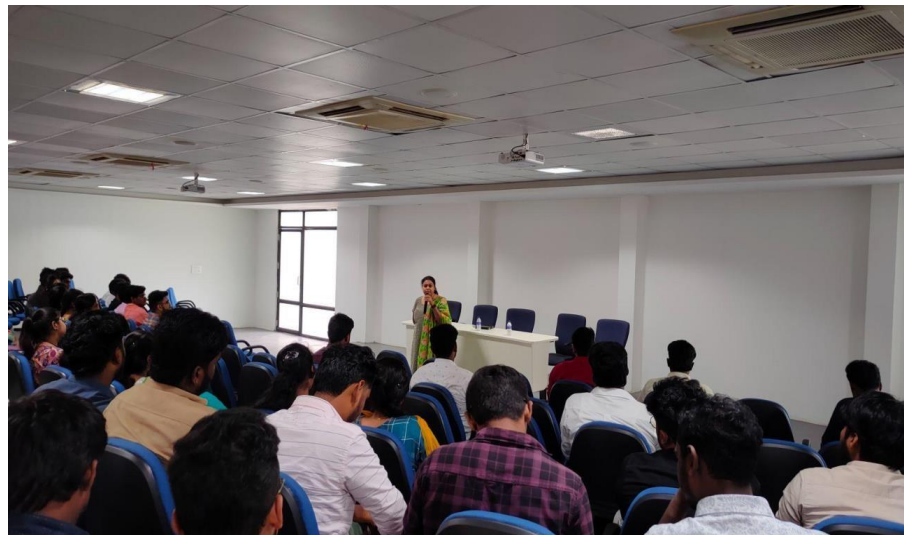


Figure 4.1.3.d. Seminar Hall-01

All these seminar halls are used for various events of the institutions like Management Meetings, Campus Interviews, Students Club Activities, NSS camps and related activities, Exhibitions, Seminars, Symposiums and Conferences to name a few.

S. Shanthi
PRINCIPAL
CARE COLLEGE OF ENGINEERING
No. 27, Thayanur, Trichy-620 009.

SMART BOARD

Smart Board is installed at a classroom and are being used during presentations and Tutor classes for a better way of presenting and preparing study materials for the students.

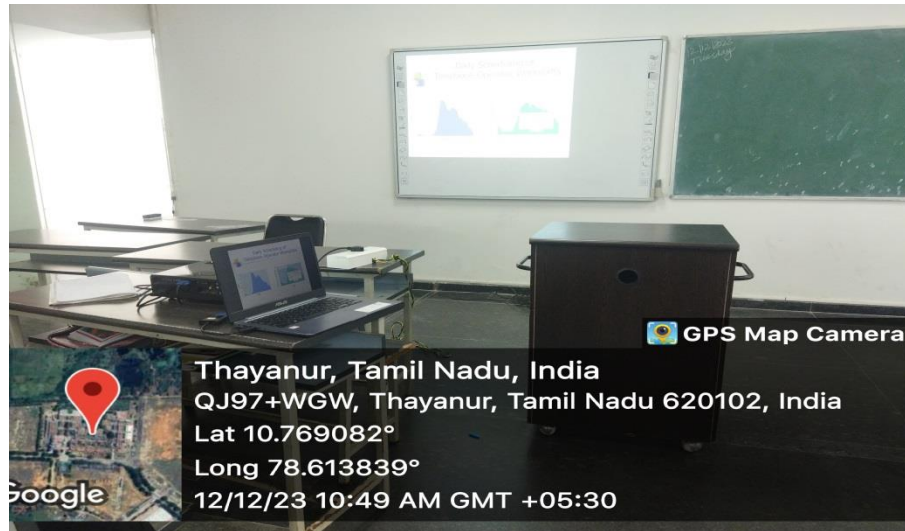


Figure 4.1.3.e. Class Room with Smart Board

The active board comes with proprietary software which enables the teachers to handle the classes in a more interactive manner using powerful tools like audio, video and various types of interfaces. The interface provided by the software can be modified based upon the nature of the subject and the category of the students attending the class.

The specifications of smart board installed are as follows:

Dimensions	82"
Nature of Board	32768 x 32768 resolution Touch sensitive and Interactive White Board
Special Features	Writing Method Pen or Fingers

WI-FI ACCESS POINT DETAILS:



Figure 4.1.3.f. Board Room with ICT Facilities

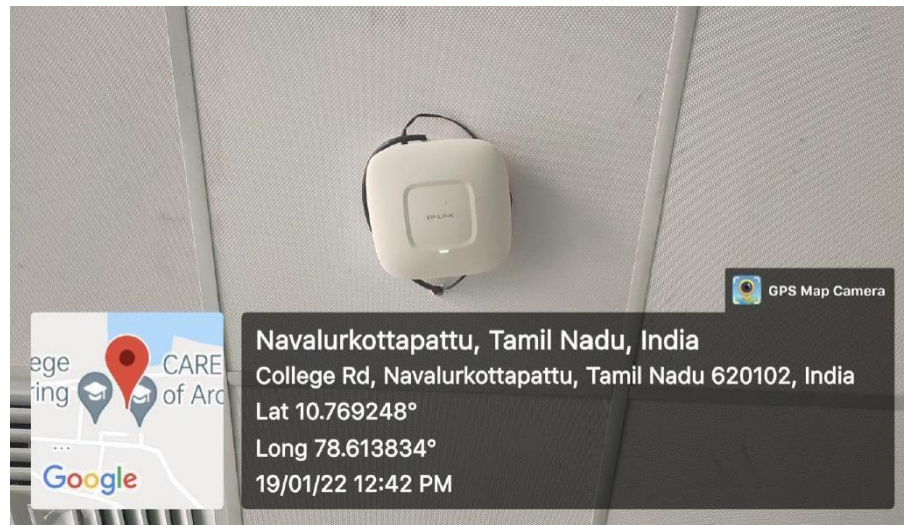


Figure 4.1.3.g. Wi-Fi Facilities for all Class Rooms

J. Shanthi

LEARNING MANAGEMENT SYSTEMS (LMS)

PRINCIPAL
CARE COLLEGE OF ENGINEERING
No. 27, Thayanur, Trichy-620 009.

The Learning Management System being implemented in the college is Google Classroom (GCR) as it's a freeware and is easily accessible for all the students and staff members across all the platforms and devices. Each student and Staff member of CARE College is being given individual official mail ids and they can access Google Classroom and Google Meet through the official mail id to avail its maximum potential.

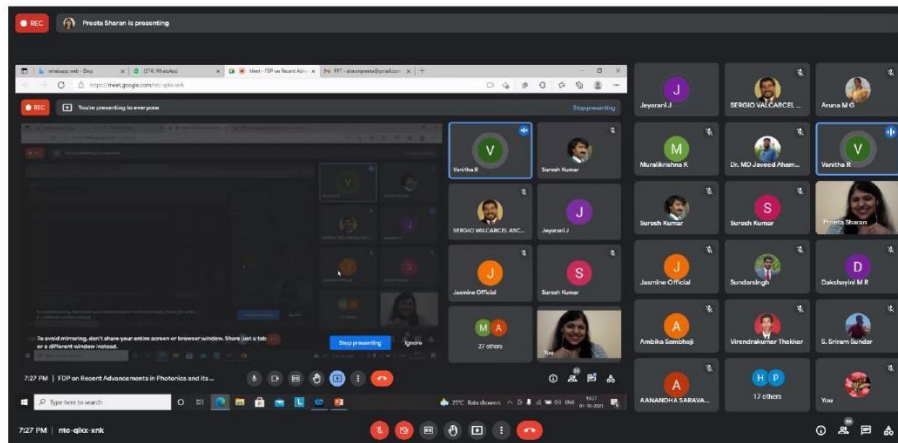


Figure 4.1.3.h. Google Class Rooms – During Sessions

The GCR was used predominantly during the Covid curfew and all the classes and seminars were taken via GCR and it paved way to make the students interact with scholars and scientists in others.

Our institution has enabled the feature to record all the google meets in the drives using the official mail ids so as to enable the students to access it afterwards for any sort of revision and this also enables the absentees to get benefited from the lectures.

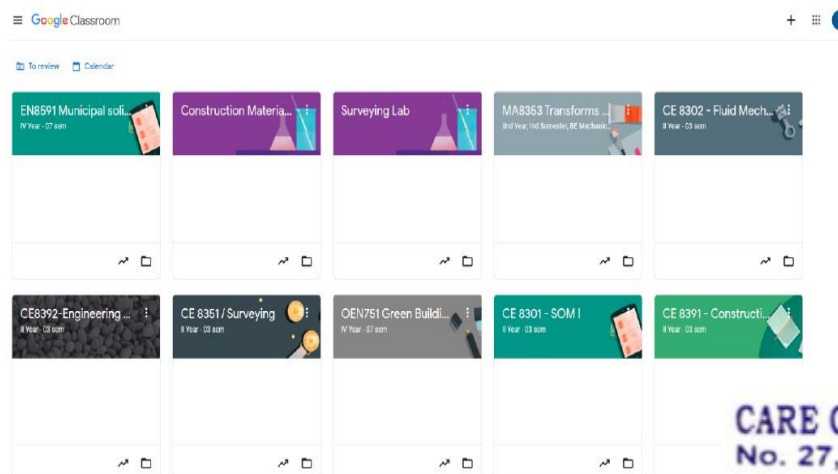


Figure 4.1.3.i. Google Class Rooms – For a Civil Classroom

Individual classrooms are created for each batch for all the respective branches and the corresponding subjects are also managed by the class coordinator. All the classes are supervised by the principal and dean and they are given access to the respective subject handling staff members.

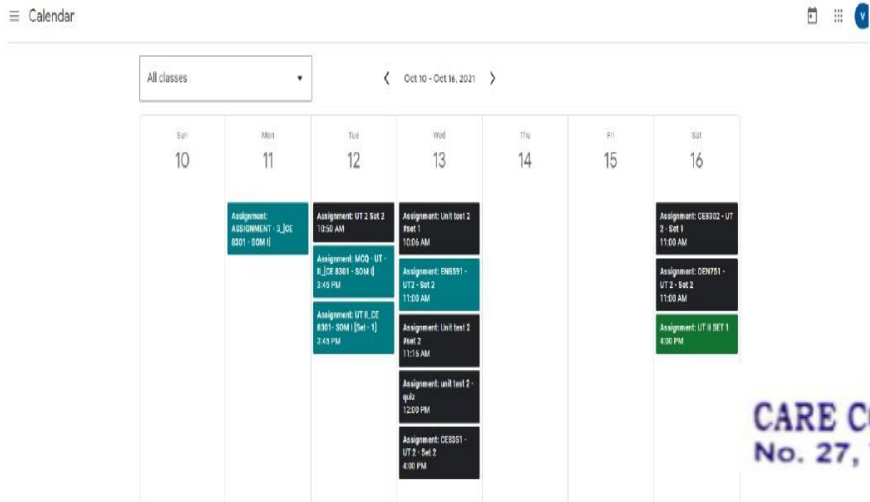


Figure 4.1.3.j. Google Class Rooms – Assignment Submission

Upon creation of classrooms, calendars are scheduled based on the assignments allocated to the students. This can also be managed by the class coordinator and the subject handling staff\member

The course materials are provided and the internal examinations are also been held in GCR. In addition to the above-mentioned features, the college has also enabled the official mail id users to subscribe to important software like MS office, Autocad, Etabs, etc and many more e-journal and Indian Standard code websites for the effective practice for the budding engineers.

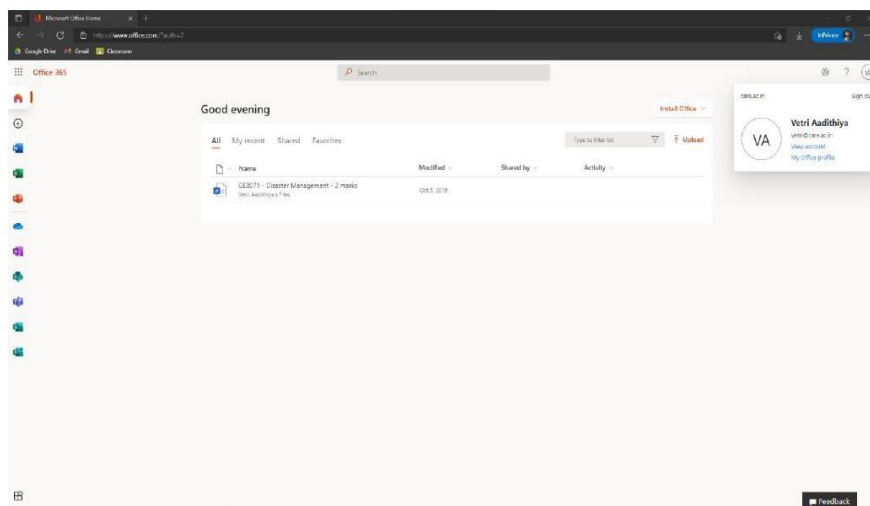


Figure 4.1.3.k. MS Office using official Mail id

CARE COLLEGE OF ENGINEERING

Approved by AICTE, New Delhi | Affiliated to Anna University, Chennai
Accredited by NAAC with 'A' Grade
#27, Thayanur, Tiruchirappalli - 620009

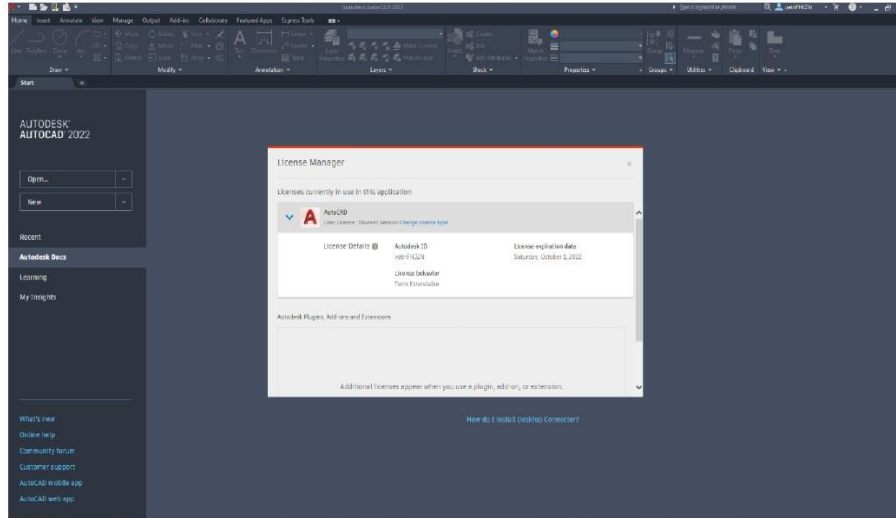


Figure 4.1.3.l. AUTOCAD Educational License

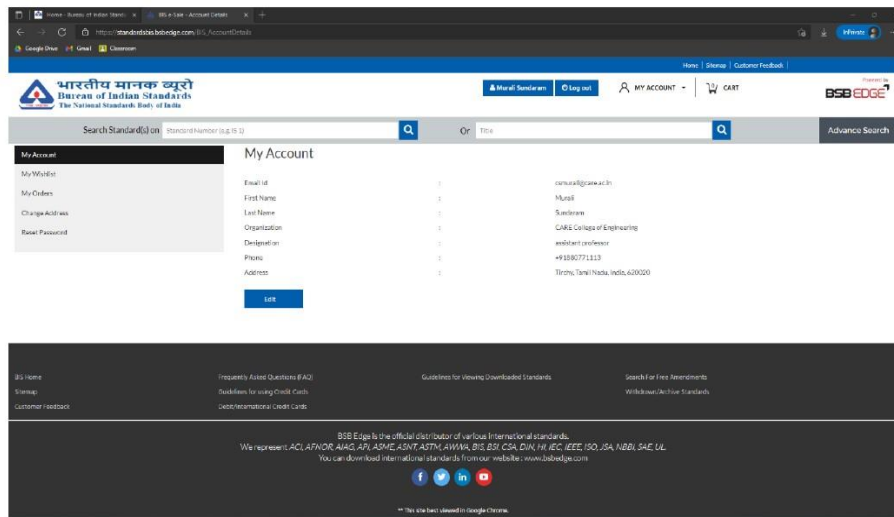


Figure 4.1.3.m. Official BIS website of Govt. of India

J. Shanthi
PRINCIPAL
CARE COLLEGE OF ENGINEERING
No. 27, Thayanur, Trichy-620 009.